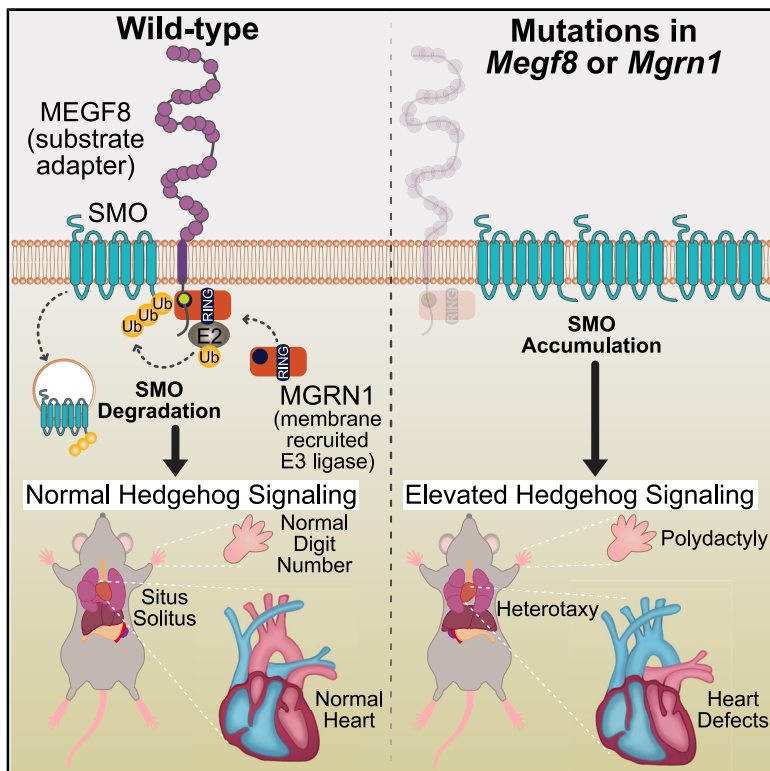


# Developmental Cell

## A Membrane-Tethered Ubiquitination Pathway Regulates Hedgehog Signaling and Heart Development

### Graphical Abstract



### Authors

Jennifer H. Kong, Cullen B. Young, Ganesh V. Pusapati, ..., Teresa M. Gunn, Cecilia W. Lo, Rajat Rohatgi

### Correspondence

tmg@mclaughlinresearch.org (T.M.G.), cel36@pitt.edu (C.W.L.), rrohlatgi@stanford.edu (R.R.)

### In Brief

Kong et al. discovered a membrane-tethered ubiquitination pathway that plays a role in the patterning of multiple tissues during development by dampening Hedgehog signaling strength. Defects in this pathway lead to disrupted left-right patterning (called heterotaxy) of the entire body plan, as well as organ-specific defects in the heart, limb, and skeleton.

### Highlights

- A cell-surface ubiquitination pathway negatively regulates Hedgehog signaling strength
- This pathway promotes the ubiquitination and downregulation of Smoothed
- Defects in this pathway cause limb, heart, and left-right patterning defects
- Mutations in genes associated with this pathway show oligogenic inheritance



## Article

# A Membrane-Tethered Ubiquitination Pathway Regulates Hedgehog Signaling and Heart Development

Jennifer H. Kong,<sup>1,6</sup> Cullen B. Young,<sup>2,6</sup> Ganesh V. Pusapati,<sup>1,6</sup> Chandni B. Patel,<sup>1</sup> Sebastian Ho,<sup>2</sup> Arunkumar Krishnan,<sup>5</sup> Jiunn-Huey Ivy Lin,<sup>2</sup> William Devine,<sup>2</sup> Anne Moreau de Bellaing,<sup>2,3</sup> Tejas S. Athni,<sup>1</sup> L. Aravind,<sup>5</sup> Teresa M. Gunn,<sup>4,\*</sup> Cecilia W. Lo,<sup>2,\*</sup> and Rajat Rohatgi<sup>1,7,\*</sup>

<sup>1</sup>Departments of Biochemistry and Medicine, Stanford University School of Medicine, Stanford, CA 94305, USA

<sup>2</sup>Department of Developmental Biology, University of Pittsburgh School of Medicine, Pittsburgh, PA 15201, USA

<sup>3</sup>Department of Pediatric Cardiology, Necker-Sick Children Hospital and The University of Paris Descartes, Paris 75015, France

<sup>4</sup>McLaughlin Research Institute, Great Falls, MT 59405, USA

<sup>5</sup>National Center for Biotechnology Information, National Library of Medicine, National Institutes of Health, Bethesda, MD 20894, USA

<sup>6</sup>These authors contributed equally

<sup>7</sup>Lead Contact

\*Correspondence: [tmg@mclaughlinresearch.org](mailto:tmg@mclaughlinresearch.org) (T.M.G.), [cel36@pitt.edu](mailto:cel36@pitt.edu) (C.W.L.), [rrohagti@stanford.edu](mailto:rrohagti@stanford.edu) (R.R.)

<https://doi.org/10.1016/j.devcel.2020.08.012>

## SUMMARY

The etiology of congenital heart defects (CHDs), which are among the most common human birth defects, is poorly understood because of its complex genetic architecture. Here, we show that two genes implicated in CHDs, *Megf8* and *Mgrn1*, interact genetically and biochemically to regulate the strength of Hedgehog signaling in target cells. MEGF8, a transmembrane protein, and MGRN1, a RING superfamily E3 ligase, assemble to form a receptor-like ubiquitin ligase complex that catalyzes the ubiquitination and degradation of the Hedgehog pathway transducer Smoothed. Homozygous *Megf8* and *Mgrn1* mutations increased Smoothed abundance and elevated sensitivity to Hedgehog ligands. While mice heterozygous for loss-of-function *Megf8* or *Mgrn1* mutations were normal, double heterozygous embryos exhibited an incompletely penetrant syndrome of CHDs with heterotaxy. Thus, genetic interactions can arise from biochemical mechanisms that calibrate morphogen signaling strength, a conclusion broadly relevant for the many human diseases in which oligogenic inheritance is emerging as a mechanism for heritability.

## INTRODUCTION

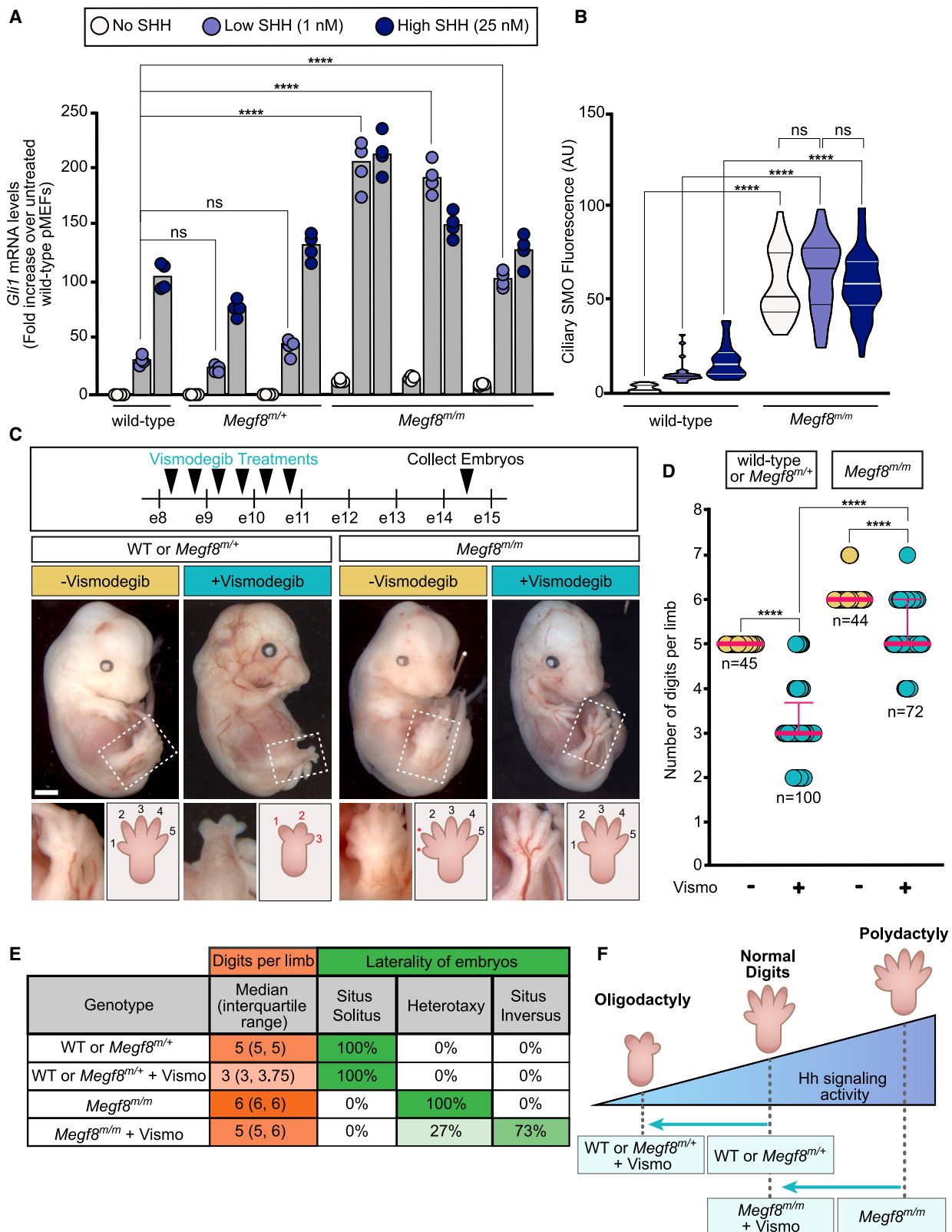
Morphogens are secreted ligands that influence differentiation, patterning, or morphogenesis in a dose-dependent manner. Temporal and spatial gradients of Hedgehog (Hh) ligands (such as Sonic Hedgehog, SHH) pattern the spinal cord and limb during development. Varying concentrations or durations of morphogen exposure produce different cellular outcomes by changing the strength or persistence of signaling in target cells (Harfe et al., 2004; Stamatakis et al., 2005). The focus in morphogen signaling has largely been on understanding how ligands, such as SHH, are produced and distributed across tissues to form gradients. However, signaling strength in target cells is a function of both ligand exposure and ligand sensitivity. Less is known about the mechanisms in target cells that modulate ligand reception and whether such mechanisms are damaged in developmental disorders.

In CRISPR screens for regulators of Hh signaling, we recently discovered several proteins that attenuate signaling strength in target cells (Pusapati et al., 2018). Because of similarities in their loss-of-function phenotypes, we focus here on three of these

proteins: multiple epidermal growth factor-like domains 8 (MEGF8), a type I single-pass transmembrane protein, and two paralogous RING superfamily E3 ubiquitin ligases, mahogunin ring finger 1 (MGRN1) and RNF157. *Megf8* was identified as a regulator of both left-right patterning and cardiac morphogenesis in mouse genetic screens (Aune et al., 2008; Engelhard et al., 2013; Zhang et al., 2009). Human mutations in *MEGF8* result in Carpenter syndrome, an autosomal recessive syndrome similarly characterized by heterotaxy (defects in left-right patterning), severe congenital heart defects (CHDs), preaxial digit duplication, and skeletal defects (Twigg et al., 2012). Unlike many other genes associated with heterotaxy, loss of *Megf8* does not result in any detectable defects in either primary or motile cilia (Aune et al., 2008; Pusapati et al., 2018; Zhang et al., 2009). Loss of MGRN1 was also previously shown to cause CHDs and heterotaxy with low penetrance in mice (Cota et al., 2006). How MEGF8 and MGRN1 regulate these critical developmental events has remained unknown for over a decade.

We investigated the biochemical and biological functions of MEGF8, MGRN1, and RNF157 using a combination of mechanistic studies in cultured cells and mouse genetics. MEGF8,





**Figure 1. Elevated Hh Signaling Causes Birth Defect Phenotypes in *Megf8*<sup>m/m</sup> Embryos**

(A and B) Hh signaling strength was assessed using qRT-PCR (A) to measure mRNA for *Gli1* (a direct Hh target gene used as a metric for signaling strength) or ciliary SMO abundance (B) in pMEFs with the indicated genotypes. Each cell line tested was derived from a different embryo. Bars in (A) denote the median *Gli1*

(legend continued on next page)

MGRN1, and RNF157 anchor a ubiquitination pathway at the cell surface that regulates the sensitivity of target cells to Hh ligands. They assemble into an unusual transmembrane E3 ubiquitin ligase complex that functions as a traffic control system for signaling receptors, including the Hh transducer Smoothed (SMO). Mouse studies revealed striking genetic interactions and gene dosage effects involving *Megf8*, *Mgrn1*, and *Rnf157* that impact the penetrance of a wide spectrum of birth defects, including CHDs, heterotaxy, skeletal defects, and limb anomalies. Our work shows how genetic interactions between components of a ubiquitin ligase complex that tunes morphogen signaling strength can lead to a birth defect syndrome inherited in an oligogenic pattern.

## RESULTS

### *Megf8* and *Mgrn1* Are Negative Regulators of Hedgehog Signaling

Among the top gene hits identified in our genome-wide screen for attenuators of Hh signaling (Pusapati et al., 2018), we pursued a detailed analysis of *Megf8* and *Mgrn1* (Figure S1A) because of similarities in their loss-of-function phenotypes. In both NIH/3T3 fibroblasts and cultured neural progenitor cells (NPCs), loss-of-function mutations in *Megf8* and *Mgrn1* resulted in an elevated response to SHH ligands caused by the accumulation of SMO at the cell surface and primary cilium (Pusapati et al., 2018). To determine if MEGF8 and MGRN1 can attenuate Hh signaling in a more physiological context, we isolated primary mouse embryonic fibroblasts (pMEFs) from embryos homozygous for previously characterized mutant alleles of *Megf8* (C193R) or *Mgrn1* (md-nc) (Figure S1A) (He et al., 2003; Phillips, 1963; Zhang et al., 2009). As we observed in the NIH/3T3 cells, *Megf8*<sup>C193R/C193R</sup> and *Mgrn1*<sup>md-nc/md-nc</sup> (hereafter referred to as *Megf8*<sup>mm</sup> and *Mgrn1*<sup>mm</sup>) pMEFs were more sensitive to SHH. When exposed to a sub-saturating concentration of SHH (1 nM), *Gli1* (a direct Hh target gene) was only partially induced in wild-type pMEFs, but this same low concentration induced *Gli1* to maximum levels in *Megf8*<sup>mm</sup> and *Mgrn1*<sup>mm</sup> pMEFs (Figures 1A and S1B). Heightened SHH sensitivity was caused by an elevated abundance of SMO in the primary cilia of *Megf8*<sup>mm</sup> and *Mgrn1*<sup>mm</sup> pMEFs, both in the absence and presence of SHH (Figures 1B and S1C).

The accumulation of ectopic ciliary SMO was also observed in multiple tissues within *Megf8*<sup>mm</sup> and *Mgrn1*<sup>mm</sup> embryos (Figure S2). In wild-type embryos, Hh signaling activity is restricted to early embryonic development and by e12.5 is turned off in most tissues, resulting in ciliary SMO restricted to cells that

were exposed to only the highest concentrations of SHH, like the progenitor cells within the ventral neural tube (Figure S2) (Corbit et al., 2005; Rohatgi et al., 2007). In contrast, SMO was concentrated in the primary cilia of nearly all *Megf8*<sup>mm</sup> embryonic tissues, regardless of whether it had been exposed to Hh ligands (Figure S2). Tissues from *Mgrn1*<sup>mm</sup> embryos did not have a widespread accumulation of ciliary SMO (Figure S2). However, ciliary SMO was inappropriately present sporadically in the dorsal neural tube and brain of *Mgrn1*<sup>mm</sup> embryos (Figure S2), consistent with our observation that *Mgrn1*<sup>-/-</sup> NPCs exhibited a moderately elevated response to SHH (Pusapati et al., 2018).

To test if the phenotypes in *Megf8*<sup>mm</sup> embryos were caused by elevated Hh signaling, we employed a pharmacological strategy to attenuate signaling strength *in utero* using vismodegib, a specific small molecule SMO inhibitor that is FDA-approved for the treatment of Hh-driven basal cell cancer in humans. Vismodegib is also a teratogen. Its acute administration to pregnant mice can produce “dose-dependent dysmorphology” in embryos, demonstrating that it can be used to tune the strength of Hh signaling during development (not simply to turn it off) (Lipinski et al., 2014). As predicted by the well-known role of Hh signaling in establishing the number of digits in the limb (Litingtung et al., 2002; Riddle et al., 1993; te Welscher et al., 2002), vismodegib administered between e8.25 and e10.75 induced oligodactyly (reduced digit number) in wild-type and *Megf8*<sup>mm/+</sup> embryos (Figures 1C–1F). Remarkably, vismodegib rescued the preaxial digit duplication universally seen in *Megf8*<sup>mm/mm</sup> embryos, restoring digit numbers to 5 in the majority of the treated embryos (Figures 1C–1F). Heterotaxy, defined as randomized organ situs, is another completely penetrant phenotype seen in *Megf8*<sup>mm/mm</sup> embryos (Figure 1E) (Aune et al., 2008). *Megf8*<sup>mm/mm</sup> embryos exposed to vismodegib also showed a partial rescue of heterotaxy: ~70% displayed concordant organ situs that was mirror symmetric (situs inversus) (Figure 1E). Vismodegib-treated *Megf8*<sup>mm/mm</sup> embryos still displayed CHDs, likely because heterotaxy was not fully rescued and because vismodegib was not delivered during some of the critical periods of heart morphogenesis. Future experiments varying the dose and time period of vismodegib administration should help clarify the role of Hh signaling in all the birth defect phenotypes seen in *Megf8*<sup>mm</sup> embryos.

*Mgrn1*<sup>mm</sup> embryos displayed a very low (<10%) rate of preaxial digit duplication (because of lower levels of SMO in cilia; Figure S2), making the assessment of vismodegib rescue challenging. However, compared with wild-type or *Mgrn1*<sup>mm/+</sup> embryos, *Mgrn1*<sup>mm/mm</sup> embryos were resistant to vismodegib-induced oligodactyly (Figures S1D and S1E), consistent with

mRNA values derived from the four individual measurements shown as circles. Violin plots in (B), with horizontal lines denoting the median and interquartile range, summarize SMO fluorescence at ~15–50 cilia.

(C) Embryos (e14.5) of the indicated genotypes treated with vismodegib according to the regimen shown at the top. The dotted box marks the hindlimb depicted in zoomed images and cartoons at the bottom show the number of digits. Scale bar, 1 mm.

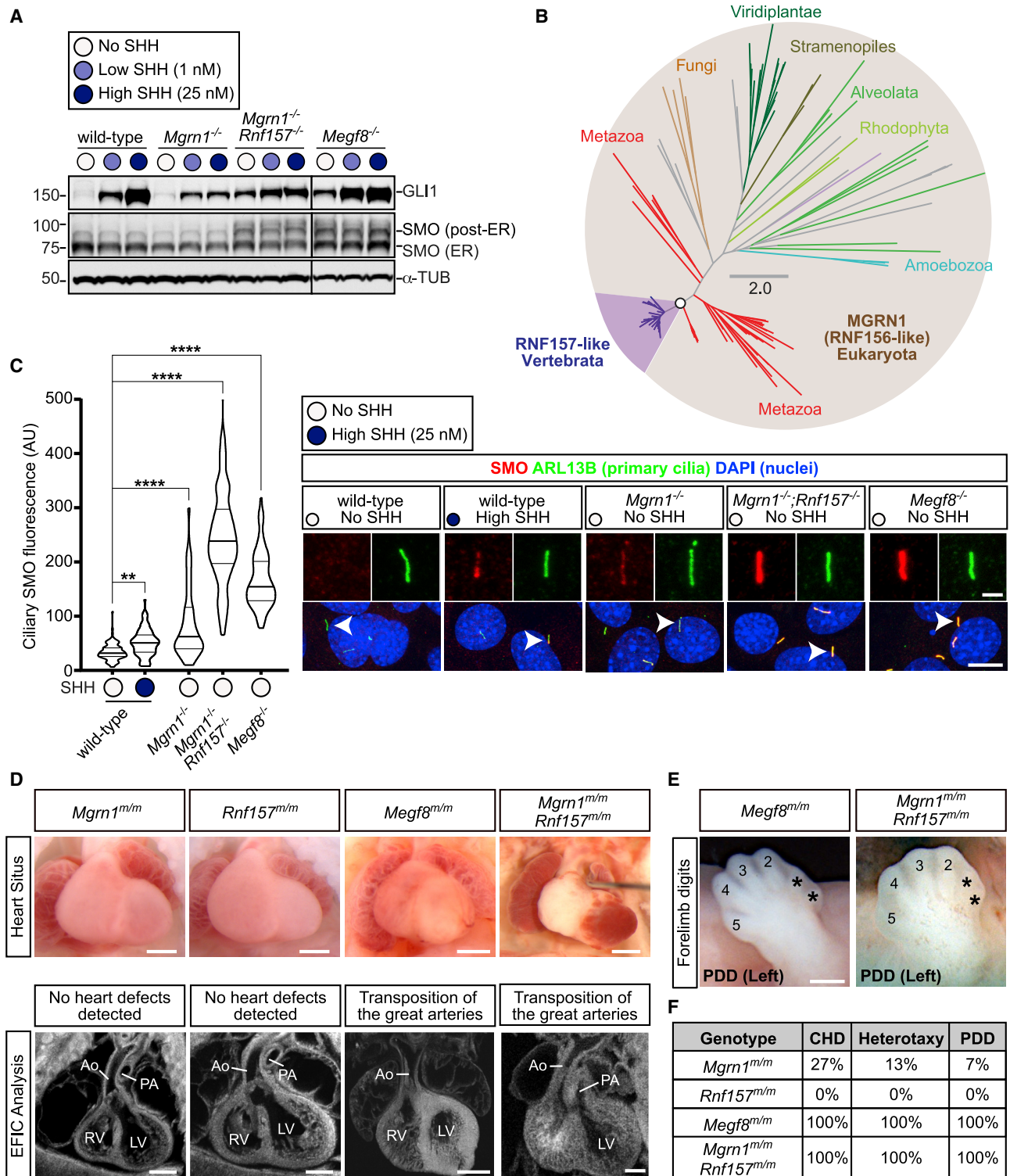
(D) Graph showing the number of digits per limb (forelimb and hindlimb) in embryos of the indicated genotypes treated with vismodegib. Each circle represents a single limb and the pink lines depict the median with interquartile range.

(E) Table summarizing digit number and left-right patterning phenotypes in embryos of various genotypes, with or without vismodegib treatment according to the regimen shown in (D).

(F) A model for how the interaction between vismodegib exposure and genotype influences digit number by altering the strength of Hh signaling.

Statistical significance was determined by one-way ANOVA (A) or Kruskal-Wallis (B and D); not-significant (ns) > 0.05 and \*\*\*\*p value ≤ 0.0001. See also Figures S1 and S2.





**Figure 2. RNF157 Partially Compensates for the Loss of MGRN1**

(A) Immunoblots showing GLI1 as a measure of Hh signaling strength and SMO abundance in the indicated NIH/3T3 cell lines treated with various concentrations of SHH.  $\alpha$ -tubulin ( $\alpha$ -TUB) is a loading control. Two populations of SMO, localized in the ER or in post-ER compartments, are marked. An analysis of additional clonal cell lines is shown in Figure S3C.

(B) Unrooted maximum-likelihood tree topology showing the evolutionary relationship between MGRN1 and RNF157, with the vertebrate-specific RNF157 lineage highlighted in purple. The open circle denotes 100% confidence support (1,000 replicates) and the scale bar indicates phylogenetic distance. The full Newick tree file is provided in Data S1.

(legend continued on next page)

the fact that they have a higher Hh signaling setpoint (Figure S1F).

The striking difference in digit number between littermate control and *Megf8<sup>m/m</sup>* or *Mgrn1<sup>m/m</sup>* embryos exposed to vismodegib (Figures 1D and S1D) supports the idea that a just-right “goldilocks” level of Hh signaling is required for proper digit patterning. Vismodegib restores SMO activity to this optimal level in *Megf8<sup>m/m</sup>* limbs but reduces SMO activity below the levels required for normal digit patterning in wild-type embryos (Figure 1F).

### Rnf157 Is a Genetic Modifier of *Mgrn1*

In both mice and cultured cells, loss of MEGF8 consistently produced stronger phenotypes than the loss of MGRN1 (Figures 1, S1, and S2), suggesting the involvement of additional genes (Pusapati et al., 2018). The reported penetrance and expressivity of CHDs, heterotaxy, and preaxial digit duplication was much higher in *Megf8<sup>m/m</sup>* embryos compared with *Mgrn1<sup>m/m</sup>* embryos (Cota et al., 2006; Zhang et al., 2009) (Table S1). Similarly in NIH/3T3 cells, when compared with the loss of MGRN1, the loss of MEGF8 resulted in more Hh signaling activity at baseline and a greater abundance of SMO at the plasma and ciliary membranes (Figures 2A and 2C). Evolutionary sequence analysis indicated that RNF157, which also encodes a RING superfamily E3 ligase, is a vertebrate-specific paralog of MGRN1 (Figure 2B). Although MGRN1 is more widely distributed, found among almost all major eukaryotic lineages, MGRN1 and RNF157 share a RING domain and a distinctive predicted substrate-binding domain that is unique among other members of the RING superfamily (Figures 2B and S3A).

These analyses raised the possibility that RNF157 may partially compensate for the loss of MGRN1. Depletion of both RNF157 and MGRN1 in NIH/3T3 cells and NPCs using CRISPR methods (Figure S3B) enhanced Hh signaling activity (Figures 2A and S3C–S3E). *Mgrn1<sup>-/-</sup>;Rnf157<sup>-/-</sup>* NIH/3T3 cells constitutively expressed GLI1, even in the absence of SHH (Figure 2A). In addition, the abundance of SMO carrying mature glycan modifications acquired in the Golgi after trafficking from the endoplasmic reticulum (hereafter “post-ER SMO”) and the abundance of SMO in primary cilia was much higher in *Mgrn1<sup>-/-</sup>;Rnf157<sup>-/-</sup>* compared with *Mgrn1<sup>-/-</sup>* cells (Figures 2A and 2C). In all assays, Hh signaling in *Mgrn1<sup>-/-</sup>;Rnf157<sup>-/-</sup>* cells was enhanced compared with that in *Mgrn1<sup>-/-</sup>* cells (and equivalent to *Megf8<sup>-/-</sup>* cells) (Figures 2A, 2C, and S3C–S3E).

To assess the relationship between RNF157 and MGRN1 *in vivo*, we generated *Rnf157<sup>-/-</sup>* mice (hereafter referred to as *Rnf157<sup>m/m</sup>* mice) using CRISPR methods (Figure S3B). Consistent with data collected by the International Mouse Phenotyping Consortium (IMPC) using a different knockout strategy (Dickinson et al., 2016), the *Rnf157<sup>m/m</sup>* mice were viable, fertile, and

without obvious developmental defects (Figures 2D and 2F). The penetrance of birth defects in *Mgrn1<sup>m/m</sup>;Rnf157<sup>m/m</sup>* double null embryos was comparable with that in *Megf8<sup>m/m</sup>* embryos (and much higher than single null *Mgrn1<sup>m/m</sup>* or *Rnf157<sup>m/m</sup>* embryos) (Figures 2D–2F and Table S1).

Based on the consequences of the simultaneous disruption of *Rnf157* and *Mgrn1* in both cultured cells and mice, we conclude that RNF157 can partially compensate for the function of MGRN1 in *Mgrn1<sup>-/-</sup>* NIH/3T3 cells, NPCs, and embryos (Figures 2A, 2C–2F, and S3C–S3E). This compensation is asymmetric, as the loss of RNF157 alone had few developmental consequences (Figures 2D and 2F), presumably because MGRN1 can fully cover RNF157 functions. In conclusion, *Rnf157* is a modifier gene: mutations in *Rnf157* are insufficient to cause a phenotype alone, but they increase the penetrance of phenotypes caused by mutations in a different gene (*Mgrn1*).

### MEGF8 Binds to MGRN1

Mouse embryos and cells that lack MEGF8 are indistinguishable from those that lack both MGRN1 and RNF157 (Figure 2 and Table S1), leading us to speculate that MEGF8, MGRN1, and RNF157 may work together to regulate SMO trafficking. We transiently expressed MEGF8 in HEK293T cells and observed that it could be co-immunoprecipitated (coIP) with either endogenous or over-expressed MGRN1 (Figures 3A and 3C). Deleting the ~170 amino-acid (aa)-long cytoplasmic tail (hereafter called the “Ctail”) of MEGF8 (MEGF8<sup>ΔCtail</sup>), but not its large ~2,500-aa extracellular domain (MEGF8<sup>ΔN</sup>), abolished the interaction with MGRN1 (Figures 3A–3C). The MEGF8 Ctail contains a peptide motif (with the sequence “MASRPFA”) that is highly conserved across a family of single-pass transmembrane proteins found in Filozoa, animal-like eukaryotes, including Filasterea, Choanoflagellata, and Metazoa (Figures 3B and S4A) (Gunn et al., 1999; Haqq et al., 2003; Nagle et al., 1999). The deletion of this motif (MEGF8<sup>ΔMASRPFA</sup>) abrogated the interaction between MEGF8 and MGRN1 (Figure 3C), establishing an E3 ligase recruitment function for this mysterious sequence element.

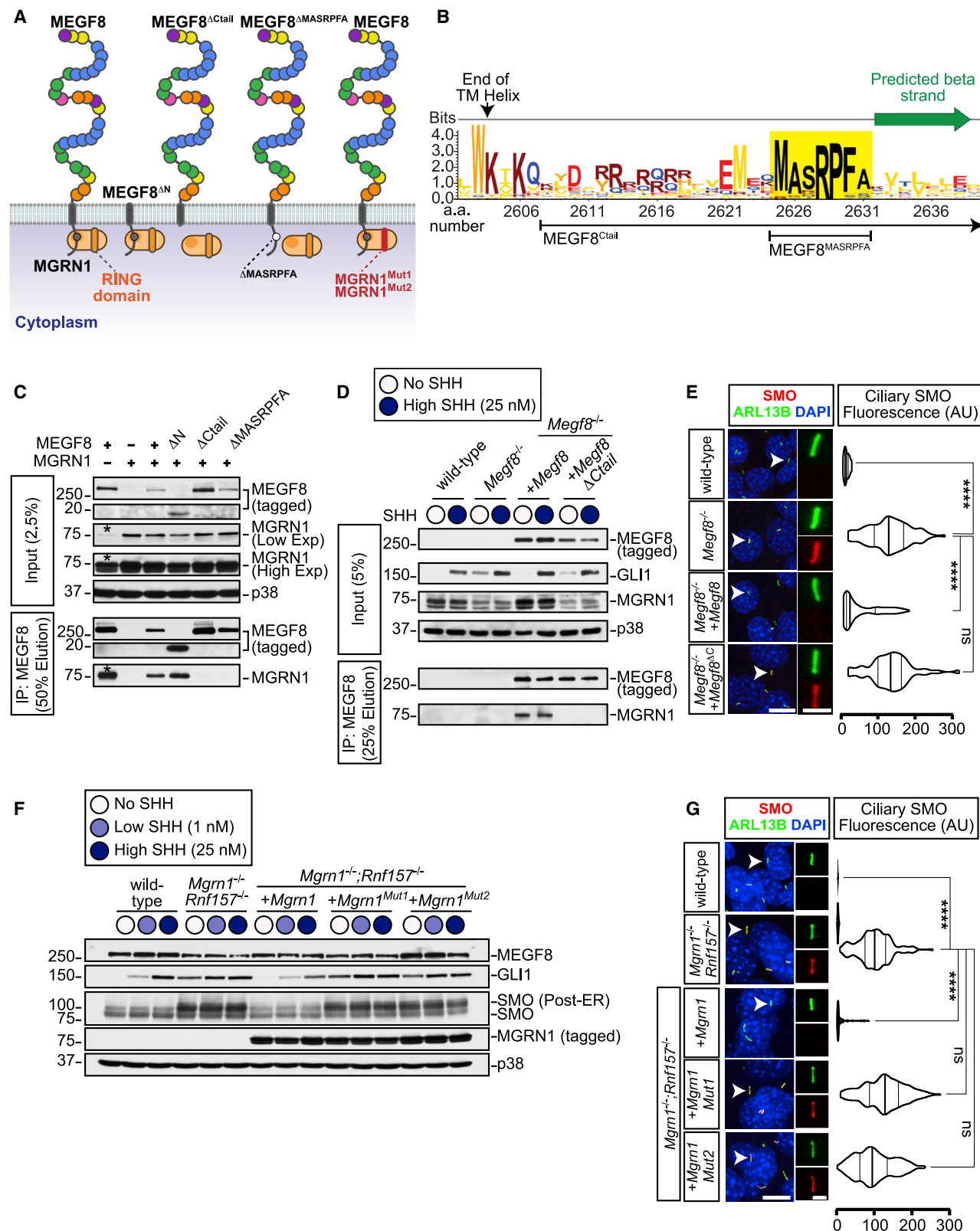
To test if the association between MEGF8 and MGRN1 was relevant for the regulation of Hh signaling, we stably expressed wild-type MEGF8 or the interaction-defective MEGF8<sup>ΔCtail</sup> mutant in *Megf8<sup>-/-</sup>* NIH/3T3 cells (Figure 3D). Stably expressed MEGF8, but not its truncated MEGF8<sup>ΔCtail</sup> variant, bound to endogenous MGRN1 (Figure 3D) and suppressed the elevated basal GLI1 and ciliary SMO seen in *Megf8<sup>-/-</sup>* cells (Figures 3D and 3E). The MEGF8-MGRN1 interaction was unchanged when signaling was activated by the addition of SHH (Figure 3D). These data establish that MGRN1 in the cytoplasm stably associates with the Ctail of MEGF8, and this interaction is required to suppress ciliary SMO levels and attenuate Hh signaling.

(C) Violin plots (left) with horizontal lines denoting the median and interquartile range and corresponding representative confocal fluorescence microscopy images (right) of SMO (red) at primary cilia (green, marked by ARL13B) in NIH/3T3 cells with the indicated genotypes (n~70 cilia/condition). Arrowheads identify individual cilia captured in the zoomed images above each panel. Statistical significance was determined by the Kruskal-Wallis test; \*\*p value ≤ 0.01 and \*\*\*\*p value ≤ 0.0001. Scale bars, 10 μm in merged panels and 2 μm in zoomed displays. See Figure S3D for analysis of additional clonal cell lines.

(D) Necropsy (top row) and ECM (bottom row) images of embryonic hearts from e13.5–14.5 embryos of the indicated genotypes. Scale bars, 200 μm.

(E) Forelimbs of embryos show preaxial digit duplication (PDD). Asterisks (\*) mark the duplicated digits. Scale bar, 200 μm.

(F) Table summarizes the frequency of CHDs, heterotaxy, and PDD in *Mgrn1<sup>m/m</sup>* (n = 15), *Rnf157<sup>m/m</sup>* (n = 6), *Megf8<sup>m/m</sup>* (n = 12), and *Mgrn1<sup>m/m</sup>;Rnf157<sup>m/m</sup>* (n = 3) embryos. A detailed list of phenotypes observed in each embryo can be found in Table S1. See also Figure S3, Table S1, and Data S1.



**Figure 3. The Interaction between MGRN1 and MEGF8 Is Required to Attenuate Hedgehog Signaling**

(A) Depictions of full-length MEGF8, truncated MEGF8 (MEGF8<sup>AN</sup>, MEGF8<sup>Δtail</sup>, MEGF8<sup>ΔMASRPFA</sup>), functional MGRN1, and catalytically inactive MGRN1 (MGRN1<sup>Mut1</sup> and MGRN1<sup>Mut2</sup>) proteins. The multiple domains in the extracellular region of MEGF8 are shown as circles and colored as in Figure S1A.

(legend continued on next page)



### The Ubiquitin Ligase Activity of MGRN1 Is Required to Attenuate Hh Signaling

MGRN1 regulates processes ranging from skin pigmentation to spongiform neurodegeneration by directly ubiquitinating multiple substrates (Chakrabarti and Hegde, 2009; Gunn et al., 2013; Jiao et al., 2009). We constructed two variants of MGRN1 (MGRN1<sup>Mut1</sup> and MGRN1<sup>Mut2</sup>) carrying mutations in highly conserved residues of the RING domain (Figure S4B). These mutations are known to abolish binding between RING domains and their cognate E2 partners, thereby preventing ubiquitin transfer to substrates (Garcia-Barcena et al., 2020; Gunn et al., 2013). We stably expressed wild-type MGRN1, MGRN1<sup>Mut1</sup>, or MGRN1<sup>Mut2</sup> in *Mgrn1*<sup>-/-</sup>;*Rnf157*<sup>-/-</sup> NIH/3T3 cells and measured the abundance of GLI1, post-ER SMO, and ciliary SMO (Figures 3F and 3G). In all three assays, wild-type MGRN1 was able to fully attenuate Hh signaling and SMO levels, but the MGRN1<sup>Mut1</sup> and MGRN1<sup>Mut2</sup> variants were inactive. Importantly, MGRN1<sup>Mut1</sup> and MGRN1<sup>Mut2</sup> were expressed at equivalent levels to MGRN1 (Figure 3F) and maintained their stable interaction with MEGF8 (Figure S4C), demonstrating their integrity. These results support the conclusion that both the stable interaction of MGRN1 with MEGF8 and its E3 ligase function are required to attenuate Hh signaling.

### The MEGF8-MGRN1 Complex Ubiquitinates SMO

At this point, our data suggested that MGRN1 functions as a membrane-tethered ubiquitin ligase complex that attenuates Hh signaling by reducing SMO abundance at the cell surface and primary cilium. Trafficking assays revealed that both the steady-state abundance and the stability of cell-surface SMO were markedly greater in *Megf8*<sup>-/-</sup> and *Mgrn1*<sup>-/-</sup>;*Rnf157*<sup>-/-</sup> cells compared with wild-type cells (Figures 4A and S5). Since the endocytosis and degradation of cell-surface receptors are often regulated by their ubiquitination, we sought to test whether SMO is a substrate of the MEGF8-MGRN1 complex.

We established an assay to measure SMO ubiquitination by expressing SMO and hemagglutinin (HA)-tagged ubiquitin (UB) together in HEK293T cells and then measuring the amount of HA-UB conjugated to SMO (Figures 4B and 4C). SMO was isolated by immunoprecipitation and the attached UB chains detected (as a smear) by immunoblotting with an anti-HA antibody. Co-expression of MGRN1 alone had no effect on SMO ubiquitination, co-expression of MEGF8 alone slightly increased SMO ubiquitination, but the co-expression of both MEGF8 and MGRN1 dramatically increased levels of ubiquitinated SMO and concomitantly reduced SMO abundance (Figure 4B). A ubiquitin mutant lacking all lysine residues (UB<sup>K0</sup>) was poorly conjugated to

SMO, suggesting that SMO is attached to poly-UB chains, rather than to a single ubiquitin (Figure S6A). Inactivating mutations in the RING domain of MGRN1 (MGRN1<sup>Mut1</sup> and MGRN1<sup>Mut2</sup>) failed to promote SMO ubiquitination (Figure 4B). SMO was a selective substrate for MGRN1 and MEGF8 because their co-expression did not change the abundance of a different ciliary GPCR, SSTR3 (Figure S6B). SMO contains 21 lysine (K) residues exposed to the cytoplasm that could function as acceptors for ubiquitin. Changing all of these lysines to arginines (R) impaired MGRN1-mediated ubiquitination (Figure S6C), but changing specific clusters of lysines in each of the cytoplasmic loops or the tail of SMO did not reduce ubiquitination (Figure S6C). Thus, MGRN1 does not seem to favor a particular lysine residue or set of lysine residues on the cytoplasmic surface of SMO, at least in this over-expression-based HEK293T assay.

Efficient SMO ubiquitination required both MEGF8 and the E3 ligase function of MGRN1. The small increase in SMO ubiquitination seen in the presence of MEGF8 alone is likely due to the presence of endogenous MGRN1 in HEK293T cells (see asterisks in the MGRN1 panel in Figure 4B). To directly test whether the physical interaction between MEGF8 and MGRN1 was required to mediate SMO ubiquitination, we co-expressed MGRN1 with one of three MEGF8 variants (diagrammed in Figure 3A): (1) MEGF8<sup>ΔCtail</sup>, (2) MEGF8<sup>ΔMASRPFA</sup> (both of which cannot bind to MGRN1; Figure 3C), or (3) MEGF8<sup>ΔN</sup>, which lacks the large extracellular domain of MEGF8 but retains its transmembrane (TM) helix and Ctail. MEGF8<sup>ΔCtail</sup> and MEGF8<sup>ΔMASRPFA</sup> failed to support SMO ubiquitination (Figure 4C). In contrast, MEGF8<sup>ΔN</sup>, which can still bind to MGRN1 (Figure 3C), efficiently promoted SMO ubiquitination and degradation (Figure 4C). Interestingly, MEGF8<sup>ΔN</sup> was much more active than full-length MEGF8 (despite both proteins being expressed at comparable levels), suggesting that the extracellular domain of MEGF8 may negatively regulate the function of the Ctail or interfere with its recognition of SMO. In addition to recruiting MGRN1 to the plasma membrane, the association between MEGF8 and MGRN1 promoted the intrinsic E3 ligase activity of MGRN1, evident through the ability of MEGF8<sup>ΔN</sup> to reduce the abundance of co-expressed wild-type MGRN1 (Figure 4C). Most E3 ligases catalyze their own ubiquitination and de-stabilization, a property that reflects their intrinsic catalytic activity.

Unexpectedly, MEGF8<sup>ΔN</sup>, which includes only the TM helix and Ctail of the protein (232 out of the 2,778 aa in the full-length protein), was sufficient to promote SMO ubiquitination (Figure 4C). To further narrow down the region of MEGF8 required for SMO recognition, we constructed a set of chimeric proteins

(B) Sequence logo showing the conservation in sequence entropy bits of the MASRPFA sequence (yellow shading) in the Ctail of MEGF8 and related proteins (alignment shown in Figure S4A). Deletion boundaries for the MEGF8 mutants shown in Figure 3A are noted below the logo.

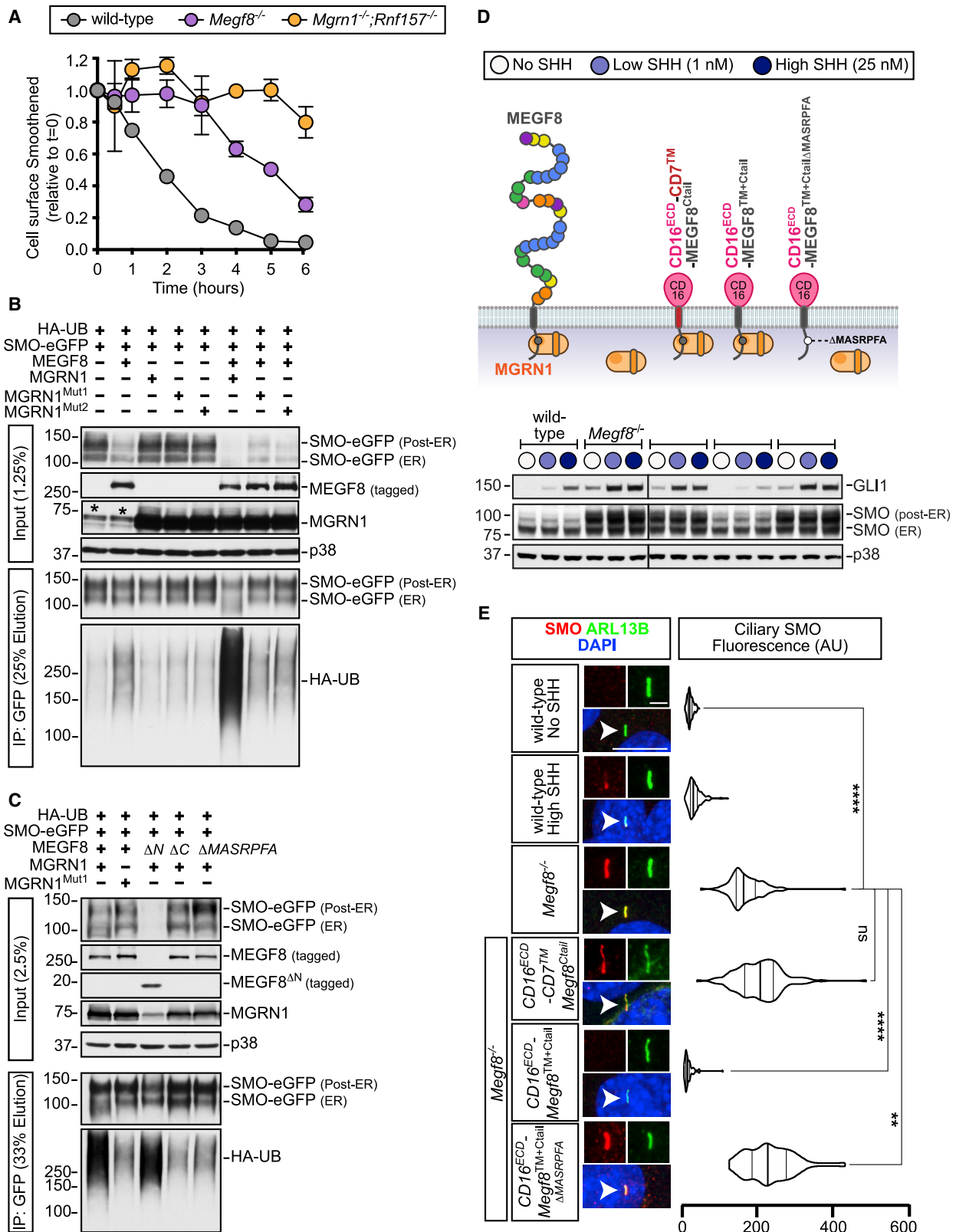
(C) The interaction between MEGF8 or MEGF8 mutants (see Figure 3A, all 1D4 tagged) and MGRN1 (FLAG tagged) was tested by transient co-expression in HEK293T cells, followed by immunoprecipitation (IP) of MEGF8. Asterisk (\*) indicates endogenous MGRN1 in HEK293T cells.

(D and E) GLI1 abundance was measured by immunoblotting (D) and SMO ciliary abundance by confocal fluorescence microscopy (E) in *Megf8*<sup>-/-</sup> NIH/3T3 cells stably expressing 1D4-tagged MEGF8 or MEGF8<sup>ΔCtail</sup> (see Figure 3A). The interaction between MEGF8 and endogenous MGRN1 was tested by colP in (D).

(F and G) GLI1, SMO, and MEGF8 abundances were measured by immunoblotting (F) and SMO ciliary abundance by confocal fluorescence microscopy (G) in *Mgrn1*<sup>-/-</sup>;*Rnf157*<sup>-/-</sup> NIH/3T3 cells stably expressing wild-type MGRN1 or variants carrying inactivating mutations in the RING domain (MGRN1<sup>Mut1</sup> and MGRN1<sup>Mut2</sup>, see Figures 3A and S4B).

Violin plots (E and G) with horizontal lines denoting the median and interquartile range summarize the quantification of SMO fluorescence (red) at ~50 individual cilia (green) per cell line from representative images of the type shown immediately to the left. Statistical significance was determined by the Kruskal-Wallis test; not-significant (ns) > 0.05 and \*\*\*\*p value ≤ 0.0001. Scale bars, 10 μm in merged panels and 2 μm in zoomed displays. See also Figure S4.





**Figure 4. Smoothened Is Ubiquitinated by the MEGF8-MGRN1 Complex**

(A) Degradation of cell-surface SMO in NIH/3T3 cells of the indicated genotypes. See Figure S5 for details. Circles represent the mean and error bars represent the standard error of two independent replicates.

(legend continued on next page)

that fused the MEGF8 Ctail, TM helix, or both to heterologous extracellular and TM domains from CD16 and CD7, respectively (diagrammed in Figure S6D). In the HEK293T assay, both the TM helix and the Ctail of MEGF8 were required to promote SMO ubiquitination, simply tethering the isolated Ctail to the plasma membrane by fusing it to a CD16-CD7 hybrid protein was not sufficient. Abrogating the interaction with MGRN1 by deleting the “MASRPFA” motif abolished the function of these chimeric proteins, demonstrating that they still require MGRN1 to promote SMO ubiquitination (Figure S6D).

If the biochemical function of MEGF8 in Hh signaling is to ubiquitinate SMO, a key prediction is that the CD16<sup>ECD</sup>-MEGF8<sup>TM+Ctail</sup> chimera, a minimal engineered protein that is sufficient to carry out this function, should be able to reverse the enhanced Hh signaling phenotype in *Megf8*<sup>-/-</sup> cells. To test this prediction, we stably expressed CD16<sup>ECD</sup>-CD7<sup>TM</sup>-MEGF8<sup>Ctail</sup>, CD16<sup>ECD</sup>-MEGF8<sup>TM+Ctail</sup>, and CD16<sup>ECD</sup>-MEGF8<sup>TM+CtailΔMASRPFA</sup> (a variant carrying the MASRPFA deletion) in *Megf8*<sup>-/-</sup> cells (Figure 4D). All three chimeras were expressed and localized properly to the cell surface as measured by flow cytometry using an antibody against the CD16<sup>ECD</sup> (Figure S6E). However, only the CD16<sup>ECD</sup>-MEGF8<sup>TM+Ctail</sup> chimera could completely suppress *Gli1* expression and both post-ER and ciliary SMO abundance (Figures 4D and 4E). These experiments again highlighted the importance of the TM helix of MEGF8 for SMO regulation: replacing it with a TM helix from CD7 abolished activity (Figures 4D and S6D). We conclude that the TM helix and Ctail of MEGF8 function as a minimal membrane-localized substrate adapter to recruit and activate the E3 ligase activity of MGRN1 toward SMO, catalyzing SMO ubiquitination and clearance from both the plasma and ciliary membrane, and consequently dampening sensitivity to Hh ligands.

### Genetic Interactions between *Megf8* and *Mgrn1*

After identifying the MEGF8-MGRN1 interaction and elucidating the ubiquitination-based mechanism through which it regulates the sensitivity of target cells to Hh ligands, we sought to investigate the role of this protein complex in embryonic development using the previously published *Megf8*<sup>m/+</sup> and *Mgrn1*<sup>m/+</sup> mouse lines (He et al., 2003; Phillips, 1963; Zhang et al., 2009). Notably, both *Megf8*<sup>m/m</sup> and *Mgrn1*<sup>m/m</sup> mutant embryos display CHDs, heterotaxy, and preaxial digit duplication. While these phenotypes are fully penetrant in the *Megf8*<sup>m/m</sup> mutants, they show lower penetrance in the *Mgrn1*<sup>m/m</sup> mutants (likely due to partial redundancy with *Rnf157*) (Figure 2F) (Cota et al., 2006; Zhang et al., 2009). To determine whether the developmental defects exhibited by these two mutants are a product of the same pathway (as predicted by our biochemical studies), we assessed for a genetic interaction by intercrossing the *Megf8*<sup>m/+</sup> and *Mgrn1*<sup>m/+</sup> mice and examining the phenotypes of the resultant double heterozygous *Megf8*<sup>m/+</sup>;*Mgrn1*<sup>m/+</sup> embryos.

As reported previously (Cota et al., 2006; Zhang et al., 2009), the single heterozygous *Megf8*<sup>m/+</sup> and *Mgrn1*<sup>m/+</sup> embryos were normal without any developmental defects, consistent with the adult viability of *Megf8*<sup>m/+</sup> and *Mgrn1*<sup>m/+</sup> mice (Figures 5 and 6; Tables S2 and S3). In contrast, the *Megf8*<sup>m/+</sup>;*Mgrn1*<sup>m/+</sup> double heterozygous embryos showed preaxial digit duplication, heterotaxy, and CHDs, phenotypes similar to those seen in homozygous *Megf8*<sup>m/m</sup> and *Mgrn1*<sup>m/m</sup> embryos (Figures 5 and 6; Table S4). Detailed anatomic phenotyping was conducted on e13.5–14.5 *Megf8*<sup>m/+</sup>;*Mgrn1*<sup>m/+</sup> embryos using both necropsies (Figures 5B and 5C) and episcopic confocal microscopy (ECM) to generate 3D histological reconstructions of intracardiac anatomy (Figure 6B).

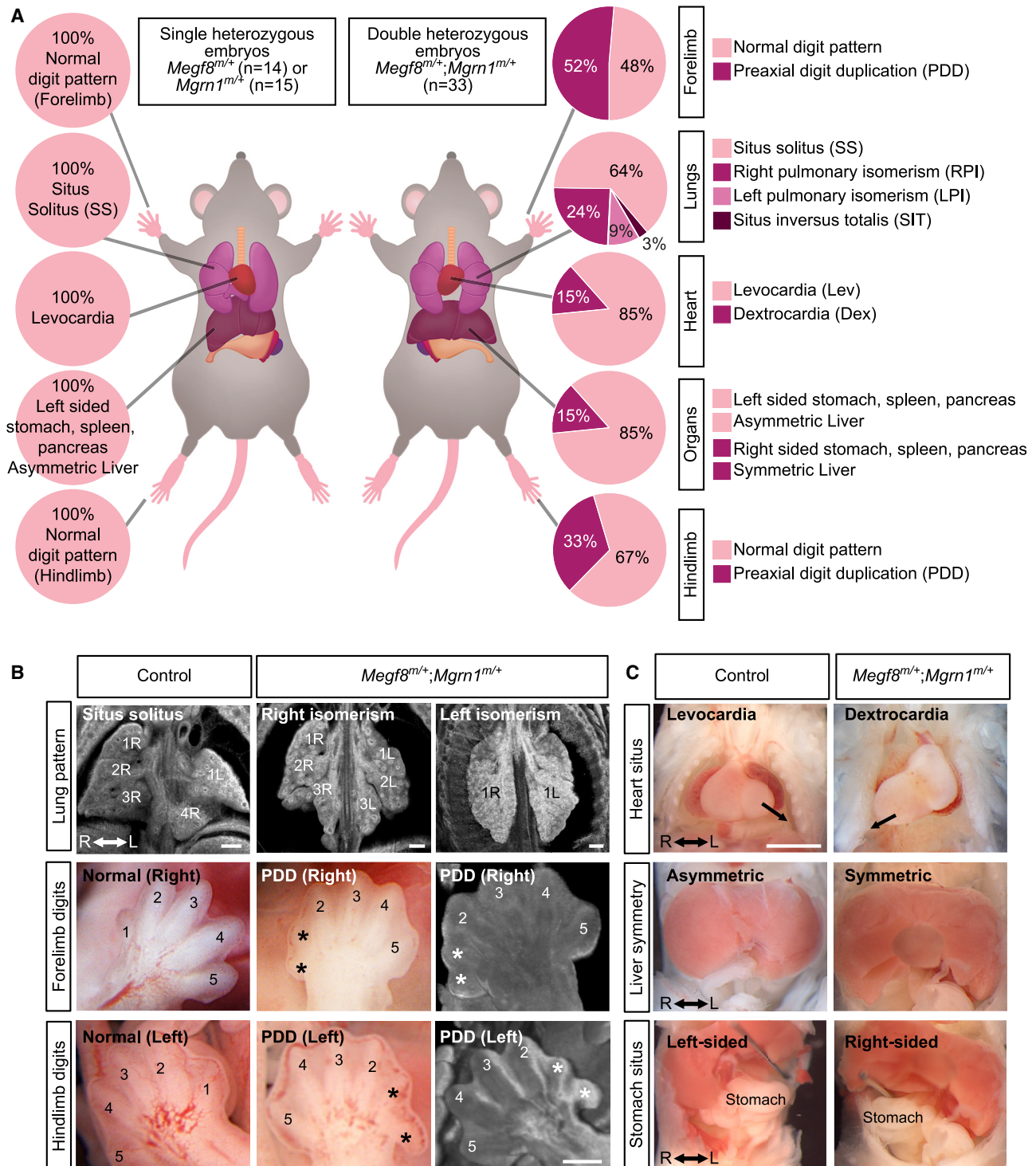
The limb, heart, and left-right patterning defects observed in 100% of *Megf8*<sup>m/m</sup> embryos (Table S1) were incompletely penetrant in *Megf8*<sup>m/+</sup>;*Mgrn1*<sup>m/+</sup> double heterozygous embryos (Figures 5 and 6; Table S4). Preaxial digit duplication, a hallmark of elevated Hh signaling in the limb bud, was observed in only 61% of *Megf8*<sup>m/+</sup>;*Mgrn1*<sup>m/+</sup> embryos (Figures 5A and 6C). Defects in left-right patterning were seen in only 36% of *Megf8*<sup>m/+</sup>;*Mgrn1*<sup>m/+</sup> embryos (Figures 5A and 6C). Heart defects were seen in ~52% of *Megf8*<sup>m/+</sup>;*Mgrn1*<sup>m/+</sup> embryos.

In addition to reduced penetrance, the CHDs seen in *Megf8*<sup>m/+</sup>;*Mgrn1*<sup>m/+</sup> double heterozygous embryos were also milder compared with *Megf8*<sup>m/m</sup> embryos. All *Megf8*<sup>m/m</sup> embryos suffered from a transposition of the great arteries (TGA), an outflow tract (OFT) malalignment defect in which the aorta emerges from the right ventricle and the pulmonary artery from the left ventricle (Figures 6A and 6B; Table S1). Among the 52% of *Megf8*<sup>m/+</sup>;*Mgrn1*<sup>m/+</sup> embryos with CHDs, only 41% of these embryos displayed TGA and 47% displayed double outlet right ventricle (DORV) with or without atrioventricular septal defect (AVSD) (Figures 6A and 6B; Table S4).

Given the known co-occurrence of heterotaxy with severe CHDs in clinical data from human birth registries (Lin et al., 2014; Pradat et al., 2003), we examined the correlation between these two types of birth defects in our mutant mouse embryos. All *Megf8*<sup>m/m</sup> embryos had both heterotaxy and TGA (Figures 2F and 6C; Table S1). In *Megf8*<sup>m/+</sup>;*Mgrn1*<sup>m/+</sup> embryos, heterotaxy was associated 100% of the time with CHDs and, conversely, CHDs were associated 64% of the time with heterotaxy (Figure 6C; Tables S4, S6, and S7). Interestingly, the presence of heterotaxy was also correlated with different CHDs: ~60% of these embryos also had TGA (Figure 6A). In contrast, *Megf8*<sup>m/+</sup>;*Mgrn1*<sup>m/+</sup> embryos with normal left-right patterning (situated solitus) did not have TGA and instead had DORV in ~20% of cases (Figure 6A). These correlations are remarkably similar to data from human birth registries, which report that ~85% of the heterotaxy cases are associated with CHDs that include DORV, TGA, and AVSD (Lin et al., 2014; Pradat et al., 2003).

(B and C) SMO ubiquitination was assessed after transient co-expression of the indicated proteins in HEK293T cells (see Figure 3A). Cells were lysed under denaturing conditions, SMO was purified by IP, and the amount of HA-UB covalently conjugated to SMO was assessed using immunoblotting with an anti-HA antibody. An asterisk (\*) indicates endogenous MGRN1.

(D and E) Total GLI1 and SMO abundances were measured by immunoblotting (D) and ciliary SMO (n~50 cilia) by fluorescence confocal microscopy (E) in *Megf8*<sup>-/-</sup> cells expressing various CD16/CD7/MEGF8 chimeras. The ability of these chimeras to support SMO ubiquitination is shown in Figure S6D and the abundances of chimeras at the cell surface is shown in Figure S6E. SMO fluorescence was quantified and represented as violin plots in (E), with horizontal lines denoting the median and interquartile range. Statistical significance in (E) was determined by the Kruskal-Wallis test; not-significant (ns) > 0.05, \*\*p value ≤ 0.01, and \*\*\*\*p value ≤ 0.0001. Scale bars, 10 μm in merged panels and 2 μm in zoomed displays. See also Figures S5 and S6.



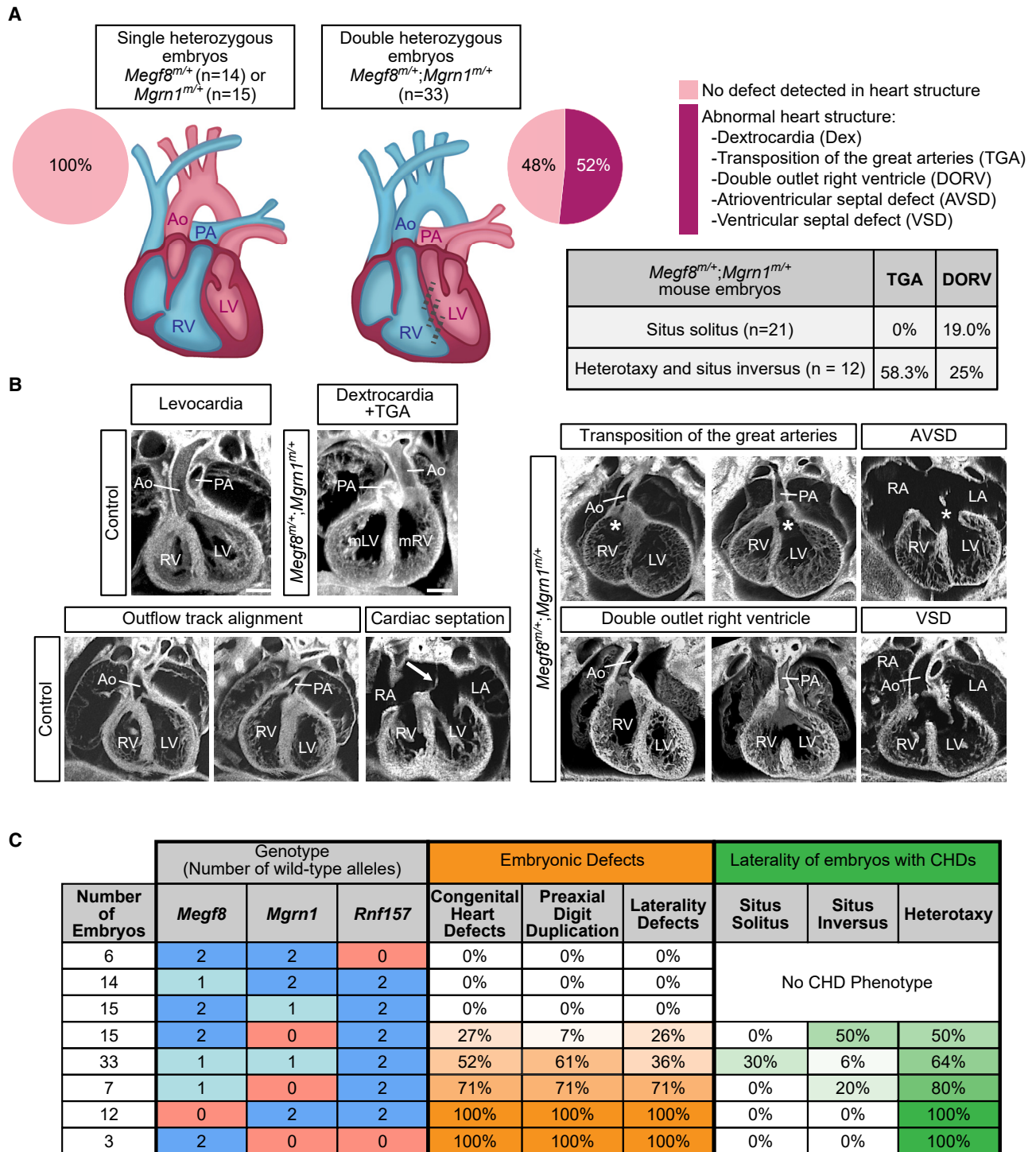
**Figure 5. A Genetic Interaction between *Megf8* and *Mgrn1* Causes Heart Defects and Heterotaxy**

(A) Summary of phenotypes observed in mouse embryos with the indicated genotypes (e13.5–14.5). Dex, dextrocardia; Lev, levocardia; LPI, left pulmonary isomerism; PDD, preaxial digit duplication; RPI, right pulmonary isomerism; SIT, situs inversus; SS, situs solitus. A detailed list of phenotypes observed in each embryo can be found in [Tables S2–S4](#).

(B) Representative light microscopy and ECM images of the developing lungs and limbs of single (control) and double heterozygous embryos. The normal right lung has 4 lobes (1R, 2R, 3R, and 4R) and the left lung has one lobe (1L). Asterisks (\*) mark the duplicated preaxial digits. Scale bars, 200  $\mu$ m.

(C) Representative necropsy images showing the position of the heart, symmetry of the liver, and location of the stomach in single (control) and double heterozygous embryos. Arrow (top row) denotes the direction of the cardiac apex. Scale bar, 1000  $\mu$ m. See also [Tables S2, S3, and S4](#).





**Figure 6. Spectrum of Heart Defects in Mice Carrying Mutant Alleles of *Megf8* and *Mgrn1***

(A and B) Summary of CHDs in mouse embryos of various genotypes (e13.5–14.5) as determined by ECM imaging. (B) shows representative ECM images of the many defects observed in double heterozygous embryos, along with normal hearts from control (single heterozygous) embryos. The white arrow in the control cardiac septation panel denotes an intact atrial primium. The asterisk (\*) in the *Megf8*<sup>m/+</sup>; *Mgrn1*<sup>m/+</sup> AVSD panel marks an ostium primium atrial septal defect (a failure of the septum primium to fuse with the endocardial cushions). Ao, aorta; AVSD, atrioventricular septal defect; Dex, dextrocardia; LA, left atrium; LV, left ventricle; mLV, morphological left ventricle; mRV, morphological right ventricle; PA, pulmonary artery; RA, right atrium; RV, right ventricle; VSD, ventricular septal defect. A detailed phenotypic analysis of each embryo can be found in Tables S2–S4. Scale bars, 100 μm.

(legend continued on next page)



The tight association between CHD and heterotaxy is also supported by the observation that all seven embryos with only preaxial digit duplication (but no CHD) had normal situs solitus (Table S4). Thus, the double heterozygous *Megf8<sup>ml/+</sup>;Mgrn1<sup>ml/+</sup>* embryos recapitulate the known association between severe CHD and heterotaxy seen in human clinical data. The wider spectrum of CHDs seen in these embryos, including DORV, compared with homozygous *Megf8<sup>ml/ml</sup>* embryos resembles the more diverse range of CHDs seen in human patients with heterotaxy (Figure 6A; Table S7) (Lin et al., 2014; Pradat et al., 2003).

### Gene Dosage Effects Involving *Mgrn1*, *Megf8*, and *Rnf157*

Our comparison of double heterozygous *Megf8<sup>ml/+</sup>;Mgrn1<sup>ml/+</sup>* embryos to homozygous *Megf8<sup>ml/ml</sup>* embryos suggested that both the penetrance and expressivity of birth defect phenotypes may be determined by the precise magnitude of ubiquitin ligase activity, which, in turn, determines the abundance of SMO and the strength of Hh signaling. This hypothesis predicts that the dosage of *Megf8*, *Mgrn1*, and *Rnf157* should influence the penetrance of birth defect phenotypes.

We analyzed embryos carrying varying numbers of loss-of-function *Megf8<sup>m</sup>*, *Mgrn1<sup>m</sup>*, and *Rnf157<sup>m</sup>* alleles (Figure 6C). *Megf8<sup>ml/ml</sup>* and *Mgrn1<sup>ml/ml</sup>;Rnf157<sup>ml/ml</sup>* embryos have a 100% penetrance of CHDs, heterotaxy, and preaxial digit duplication, presumably because the functions of both the transmembrane adaptor (MEGF8) and the cytoplasmic E3 ligases (MGRN1 or RNF157) are essential for SMO ubiquitination. Loss of one allele of *Megf8* (*Megf8<sup>ml/+</sup>* embryos), one allele of *Mgrn1* (*Mgrn1<sup>ml/+</sup>* embryos), or both alleles of *Rnf157* (*Rnf157<sup>ml/ml</sup>* embryos) did not lead to birth defects, likely because the abundance of the MEGF8-MGRN1/RNF157 complex remains above the threshold required for normal development. However, between these two extremes, decreasing the cumulative gene dosage (by increasing the number of mutant alleles) of *Mgrn1* and *Megf8* led to a progressive increase in the penetrance of CHDs, heterotaxy, and preaxial digit duplication (Figure 6C; Tables S5 and S6). In addition, the incidence of TGA (Table S6) and the co-occurrence of heterotaxy (Figure 6C) increased with decreasing gene dosage. These striking gene dosage effects support the model that a progressive decrease in ubiquitin ligase function leads to a progressive increase in the penetrance and expressivity of birth defects, likely by driving a graded increase in Hh signaling strength.

The exquisite sensitivity of heart development to mutations in *Megf8*, *Mgrn1*, and *Rnf157* seen in mouse embryos prompted us to look for potentially damaging variants in these genes in patients with CHDs. Using whole-exome sequencing data from a cohort of 652 CHD patients, we searched for missense variants in all three genes with a combined annotation dependent depletion (CADD) score >10. We additionally used a stringent mean allele frequency (MAF) filter of <0.5% for *MEGF8* and *MGRN1*, but a more relaxed MAF filter (< 5%) for *RNF157*, since the

*Rnf157<sup>ml/ml</sup>* mouse has no phenotype. Using these criteria, we identified one patient (7501) with two mutations each in *MEGF8* and *MGRN1* and one mutation in *RNF157* (Figures S7A and S7B; Table S8). Genotyping the parents of patient 7501 revealed that the two mutations in *MEGF8* and *MGRN1* were both present in the same allele, with the former transmitted from the mother and the latter from the father (along with the *RNF157* variant). Patient 7501 clinically presented with OFT anomalies: pulmonary atresia, a severely hypoplastic right ventricle with an intact interventricular septum and an atrial septal defect (Figures 7B and S7C). Primary fibroblasts from patient 7501 displayed an increased abundance of ciliary SMO (Figure 7C) and elevated *Gli1* expression (Figure 7D), both at baseline and in response to SHH when compared with fibroblasts generated from a subject without CHD. Collectively, our mouse and human data support a model where disruption of the MEGF8-MGRN1/RNF157 ubiquitin ligase complex can lead to elevated SMO, increased Hh signaling strength and, consequently, to the emergence of CHDs.

### DISCUSSION

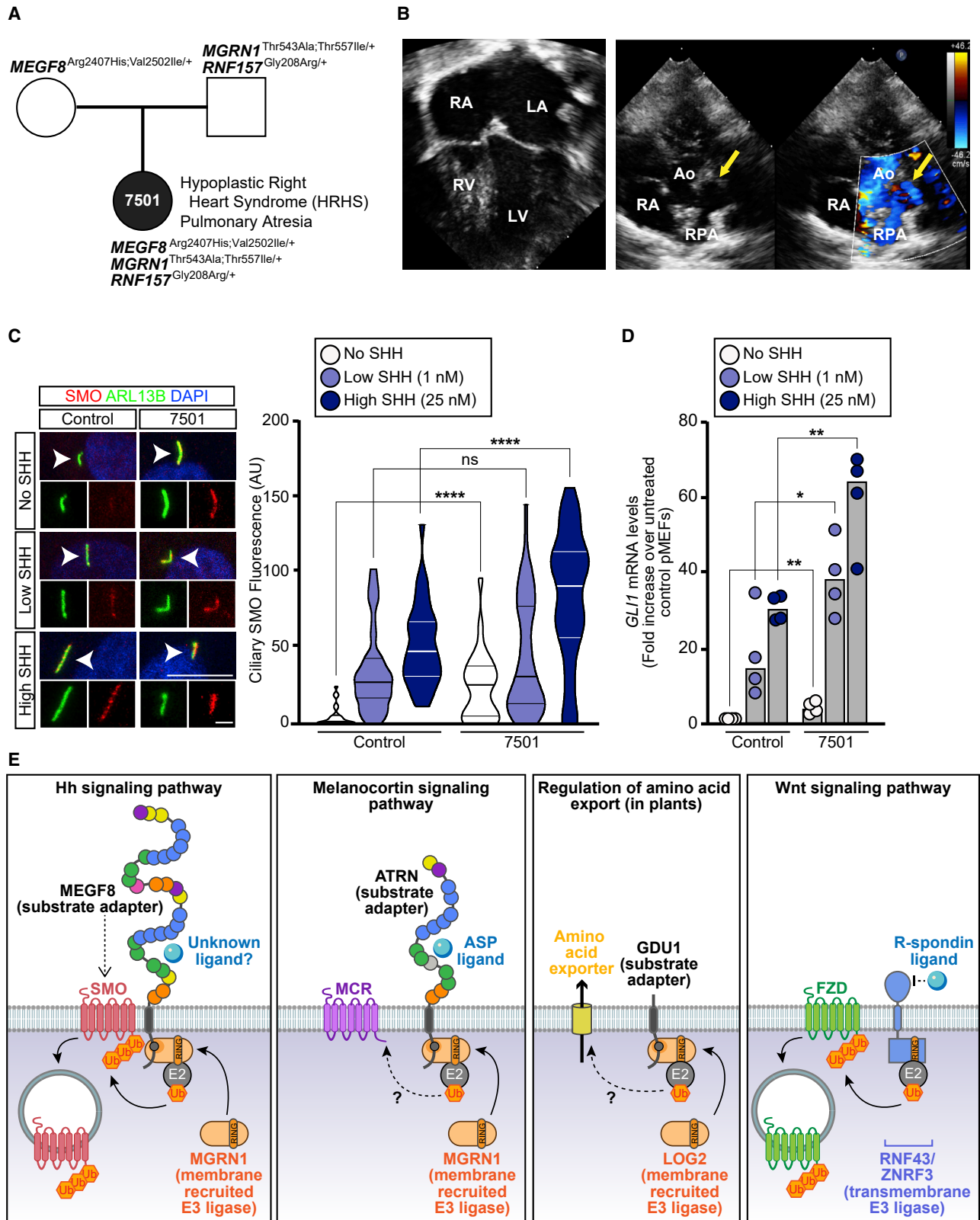
Using a combination of mechanistic studies, mouse genetics, and deep anatomical phenotyping, we uncovered a unique membrane-tethered ubiquitination pathway that regulates developmental patterning in a variety of tissues by controlling the trafficking of signaling receptors. MEGF8 functions as a TM substrate adaptor that recruits a cytoplasmic E3 ligase (MGRN1) to catalyze the ubiquitination of SMO, leading to its endocytosis and degradation (Figure 7E). This ubiquitination reaction reduces the abundance of SMO at the cell surface and primary cilium, and consequently, dampens Hh signaling in target cells.

While cilia-localized ubiquitination is emerging as a mechanism that regulates ciliary trafficking (Desai et al., 2020; Shinde et al., 2020), the function of the MEGF8-MGRN1 complex is unlikely to be related to cilia or ciliary trafficking. Cell-surface biotinylation experiments (see Figure S5) clearly show that overall cell-surface SMO (not just ciliary SMO) rises dramatically in mutant cells. In addition, we have not been able to detect MGRN1 or MEGF8 in cilia. Hence, the ciliary accumulation of SMO in *Megf8<sup>ml/ml</sup>* and *Mgrn1<sup>ml/ml</sup>* cells and embryos is likely to be a secondary consequence of increased cell-surface SMO.

### Receptor-like Ubiquitin Ligases Attenuate Signaling Strength

The architecture of the MEGF8-MGRN1 complex is notable for the presence of a membrane-spanning component with an extracellular or luminal domain (Figure 7E). This feature suggests a receptor-like function, conceptually analogous to receptor kinases, to transmit extracellular or luminal signals across the membrane to alter the ubiquitination of substrates in the cytoplasm. Interestingly, Frizzled (FZD) proteins, receptors for WNT

(C) Table shows the frequencies of CHDs, preaxial digit duplication, and laterality defects observed in mouse embryos carrying increasing numbers of mutant alleles of *Megf8*, *Mgrn1*, and *Rnf157*. Darker shades of orange and green indicate a higher penetrance of the indicated birth defect and laterality phenotype, respectively. A detailed phenotypic analysis of every embryo of each genotype can be found in Tables S1–S5 and a full compilation of the penetrance of various phenotypes is provided in Table S6. For a more detailed analysis of the correlation between laterality and CHD phenotypes observed in *Megf8<sup>ml/+</sup>;Mgrn1<sup>ml/+</sup>* embryos, refer to Table S7. See also Tables S1–S7.



(legend on next page)

ligands that are the closest relatives of SMO in the GPCR superfamily (Bjarnadóttir et al., 2006) are regulated by transmembrane E3 ligases (RNF43 and ZNRF3) in which the RING-containing domain is directly fused to the membrane-spanning component (Figure 7E). While a ligand for MEGF8 remains unknown, ZNRF3 and RNF43 are regulated by R-Spondin ligands, critical regulators of progenitor cells during development, and stem cells in adult tissues (Hao et al., 2012; Koo et al., 2012). The ubiquitination of receptors by membrane-tethered E3 ligases represents an attractive post-transcriptional mechanism to control the sensitivity of tissues to signaling ligands during development or tissue renewal.

Evolutionary sequence analysis supports a widespread role for MGRN1-based TM E3 ligase complexes in ubiquitin signaling. In animals and their immediate sister lineages, MGRN1 and RNF157 likely function as common components of multiple membrane-tethered E3 ligase complexes featuring members of the MEGF8 family of cell-surface proteins, all of which contain an equivalent of the cytoplasmic MASRPFA motif (Figure S4A) (Gunn et al., 1999; Haqq et al., 2003; Nagle et al., 1999). For example, MGRN1 and a different member of this family, Attractin (ATRIN), have been implicated in the regulation of melanocortin receptor levels (Figure 7E) (Cooray et al., 2011; Walker, 2010). A plant ubiquitin ligase, LOG2, which belongs to the MGRN1 family, associates with and ubiquitinates a single TM protein Glutamine dumper-1 (GDU1), which in turn regulates aa transport (Figure 7E) (Guerra et al., 2013). Strikingly, human MGRN1 can functionally replace LOG2 in plants (Guerra et al., 2013). We propose that the MGRN1 family of RING E3 ligases can associate more generally across eukaryotes with single-pass TM proteins, each of which functions as a substrate adaptor to target the ubiquitination of specific receptors or transporters (Figure 7E).

It will be interesting to unravel how these TM E3 ligases are regulated in cells. Key questions include the potential role of phosphorylation in modulating ligase activity or substrate recognition, the type of molecular linkages used in the ubiquitin chains attached to SMO, and the identity of the deubiquitinase that opposes the function of MGRN1. Most interesting is the mysterious function of the large MEGF8 extracellular domain, which may allow regulation of Hh signaling by an extracellular ligand, extracellular matrix protein, or homotypic interaction (Figure 7E).

### Role of Hh Signaling in Left-Right Patterning and Heart Development

Our vismodegib rescue experiments (Figure 1) strongly suggest that preaxial digit duplication phenotypes in mice carrying mutant alleles of *Megf8* and *Mgrn1* are caused by elevated Hh signaling. However, further work will be required to determine whether the heterotaxy and CHD phenotypes are also caused entirely by increased Hh signaling.

Both decreased and increased Hh signaling has previously been implicated in left-right patterning, a very early event in development that directs the correct asymmetric development of the heart and other visceral organs (Levin et al., 1995; Tsiairis and McMahon, 2009; Zhang et al., 2001). The genetic deletion of SMO, which reduces Hh signaling strength, disrupts left-right patterning and causes a midline heart tube that fails to loop to the right and an embryo that fails to turn (Zhang et al., 2001). Conversely, ablation of the conserved negative regulator SUFU, which causes increased Hh signaling, also leads to left-right patterning defects (Cooper et al., 2005). *Sufu*<sup>-/-</sup> embryos fail to undergo embryonic turning, have a ~30%–40% frequency of reversed heart looping (L-looping), and show either bilateral or absent expression of *Pitx2*, an established determinant of organ situs. These seemingly discordant results may be explained by the idea that left-right patterning (like digit patterning, see Figure 1F) depends on a just-right “goldilocks” level of Hh signal amplitude or duration.

Hh signaling also influences multiple aspects of heart development: development of the secondary heart field and proper septation of the atria and outflow tract (Dyer and Kirby, 2009; Hoffmann et al., 2009; Washington Smoak et al., 2005). Thus, CHDs seen in our mutant mice may be caused by both early defects in left-right patterning and by later defects in Hh-mediated patterning of the cardiac septa and outflow tract. The common link of both processes to the precisely calibrated level of Hh signaling may explain the tight association between heterotaxy and CHDs that has been long-noted in clinical studies and is recapitulated in our mutant mouse embryos (Pradat et al., 2003).

We acknowledge that MEGF8 and MGRN1/RNF157 may regulate signaling receptors other than SMO, and some of the birth defect phenotypes we observe may be related to the disruption of other signaling pathways. Genetic and pharmacological experiments that attenuate Hh signaling or disrupt

### Figure 7. Damaging Variants in *MEGF8*, *MGRN1*, and *RNF157* Are Associated with Congenital Heart Defects in Humans

(A) Trio pedigree analysis showing the inheritance of *MEGF8*, *MGRN1*, and *RNF157* variants from two affected parents to a progeny (patient 7501) with a severe CHD. The position of these variants in *MEGF8*, *MGRN1*, and *RNF157*, their evolutionary conservation, allele frequency, and predicted damaging effect on protein function are shown in Figures S7A and S7B. Whole-exome sequencing results can be found in Table S8.

(B) Four-chamber view (left) or short axis view (right) of an echocardiogram from patient 7501 demonstrating a hypoplastic right ventricle (RV) and membranous pulmonary atresia (yellow arrows). RA, right atrium; LA, left atrium; LV, left ventricle; RPA, Right Pulmonary Artery; Ao, Aorta.

(C and D) Ciliary SMO (C) or *GLI1* qRT-PCR (D) was used to assess Hh signaling in primary fibroblasts from patient 7501 (A) and from an unaffected control. Scale bars are 10  $\mu$ m in merged panels and 2  $\mu$ m in zoomed displays. The violin plot in (C) summarizes the quantification of SMO at ~20–50 cilia for each condition, where the horizontal lines (left) or short axis view (right) denote the median and interquartile range. The bars in (D) denote the median *GLI1* mRNA values derived from the four individual measurements shown. Statistical significance was determined by the Mann-Whitney test (C) and unpaired t-test (D); not-significant (ns) > 0.05, \*p value  $\leq$  0.05, \*\*p value  $\leq$  0.01, and \*\*\*\*p value  $\leq$  0.0001.

(E) Regulation of signaling and transport by receptor-like E3 ubiquitin ligases. A model for the mechanism of SMO regulation by the MEGF8-MGRN1 complex (far left) highlights its conceptual similarity to the regulation of melanocortin receptors (MCRs) by the ATRN-MGRN1 complex (middle left), aa export by the GDU1-LOG2 complex in plants (middle right), and FZD receptors for WNT ligands by the ZNRF3/RNF43 family of TM E3 ligases (far right). MEGF8 functions as a TM substrate adaptor, recruiting MGRN1 (and presumably an unknown E2 enzyme) through its Ctail to promote the ubiquitination of SMO. SMO ubiquitination leads to its internalization and degradation, thus attenuating responses to Hh ligands. See also Figure S7 and Table S8.

the MEGF8-MGRN1 complex at earlier time points in development or in specific tissues (such as the lateral plate mesoderm or developing cardiac outflow tract) will be required to uncover the molecular and cellular mechanisms through which these proteins regulate left-right patterning and heart development.

### Oligogenic Interactions and Gene Dosage Effects Underlie Birth Defects

While single heterozygous *Megf8*<sup>m/+</sup> and *Mgrn1*<sup>m/+</sup> embryos are normal, double heterozygous *Megf8*<sup>m/+</sup>;*Mgrn1*<sup>m/+</sup> embryos display CHDs with heterotaxy. This phenomenon has been called “synthetic haploinsufficiency” and can result in an oligogenic pattern of inheritance, where mutations in one gene affect the phenotypic outcome of mutations in a different gene (Kousi and Katsanis, 2015; Veitia et al., 2013). Synthetic haploinsufficiency is most commonly seen between genes that encode subunits of a protein complex, like MEGF8 and MGRN1 (Veitia, 2010). Pioneering studies of Bardet-Biedl Syndrome (BBS) and other inherited retinopathies have demonstrated the importance of oligogenic interactions for understanding the genetic etiology of human diseases (Badano et al., 2006; Katsanis et al., 2000).

Beyond binary genetic interactions, the penetrance and expressivity of birth defect phenotypes progressively increase as an inverse function of the gene dosage of *Megf8*, *Mgrn1*, and *Rnf157*. We propose that this quantitative effect of mutations in this pathway is explained by the central role of the MEGF8-MGRN1 pathway in calibrating the amplitude of Hh signaling in target cells. The inheritance of increasing numbers of *Megf8*, *Mgrn1*, and *Rnf157* mutant alleles will lead to a progressive decrease in the abundance (and hence activity) of the MEGF8-MGRN1/RNF157 complex. Decreasing E3 ligase activity will result in progressive increases in cell-surface and ciliary SMO and, thus, increases in target cell sensitivity to Hh ligands. More generally, our results show that developmental patterning events can be tightly regulated by mechanisms in target cells that function to precisely tune sensitivity to extracellular morphogens.

We finish by noting that our genetic analyses highlight how interactions between a small number of genes can produce a complex inheritance pattern (common to many human diseases). Homozygous mutations in *Megf8* result in a uniform phenotypic spectrum, with 100% of embryos displaying TGA, heterotaxy, and preaxial digit duplication. However, the co-inheritance of one mutant allele of *Megf8* with one mutant allele of *Mgrn1* (even in the homogeneous genetic background of inbred mice) results in both incomplete penetrance and variable expressivity of phenotypes, manifested by a wider range of CHDs, such as TGA, DORV, and septal defects. Indeed, whole-exome sequencing studies of human CHD cohorts increasingly support a prominent role for such oligogenic inheritance mechanisms in the genetic etiology of CHDs (Gifford et al., 2019; Jin et al., 2017; Liu et al., 2017, 2020; Priest et al., 2016).

### STAR★METHODS

Detailed methods are provided in the online version of this paper and include the following:

- KEY RESOURCES TABLE
- RESOURCE AVAILABILITY
  - Lead Contact
  - Materials Availability
  - Data and Code Availability
- EXPERIMENTAL MODEL AND SUBJECT DETAILS
  - NIH/3T3 and HEK293T Cell Culture
  - Generation of Primary Mouse Embryonic Fibroblasts
  - Patient Recruitment and Nasal Sampling for Patient Derived Fibroblast Cultures
  - Hh Signaling Assays in NIH/3T3 Cells and Primary Fibroblasts
  - Neural Progenitor Differentiation Assay
  - Generation of Knockout Cell Lines
  - Generation of Stable Cell Lines Expressing Transgenes
  - Established Mouse Lines
  - Generation and Validation of *Rnf157*<sup>-/-</sup> Mutant Mice
- METHOD DETAILS
  - Constructs
  - Reagents and Antibodies
  - Protein Sequence Analysis
  - Immunoprecipitation and Western Blotting
  - Flow Cytometry of Live Cells
  - SMO Internalization Assay
  - Ubiquitination Assay
  - Immunofluorescence Staining of Cells and Tissue and Image Quantifications
  - Vismodegib Dosing via Oral Gavage
  - Mouse Embryo Phenotyping Analysis
  - Variant Discovery and Validation
- QUANTIFICATION AND STATISTICAL ANALYSIS

### SUPPLEMENTAL INFORMATION

Supplemental Information can be found online at <https://doi.org/10.1016/j.devcel.2020.08.012>.

### ACKNOWLEDGMENTS

We thank Robert Lipinski for invaluable advice on the *in utero* treatment of embryos with vismodegib, Derek Silvius and Janet Peters for genotyping, the McLaughlin Research Institute Animal Resource staff for animal care, and Connie Chuy for her mouse and heart diagrams. R.R. was supported by a grant from the National Institutes of Health (GM118082), G.P. by a postdoctoral fellowship from the American Heart Association (14POST20370057), and J.K. by a postdoctoral fellowship from the American Heart Association (19POST34380734) and a K99/R00 award from the NIH (GM13251801). C.W.L., C.B.Y., and S.H. were supported by grants from the NIH (HL142788 and HL132024) and the DOD (W81XWH-15-1-0649 and W81XWH-16-1-0613). A.K. and L.A. are supported by the intramural funds of the National Library of Medicine, NIH.

### AUTHOR CONTRIBUTIONS

Conceptualization, J.H.K., G.V.P., R.R., C.W.L., and T.M.G.; Methodology, J.H.K., C.B.Y., and T.M.G.; Formal analysis, A.K., L.A., J.H.K., and C.B.Y.; Investigation, J.H.K., G.V.P., C.B.Y., T.M.G., C.P., S.H., J.-H.I.L., W.D., A.M.d.B., and T.S.A.; Resources, R.R., C.W.L., T.M.G., J.I.L., and W.D.; Writing – Original Draft, J.H.K., R.R., and C.W.L.; Writing – Revision and Editing, J.H.K., R.R., C.W.L., T.M.G., G.V.P., and C.B.Y.; Visualization, J.H.K., G.V.P., C.B.Y., A.K., L.A., and C.B.Y.; Supervision, R.R., C.W.L., T.M.G., and L.A.; Project Administration, J.H.K.; Funding Acquisition, R.R., C.W.L., T.M.G., and L.A.



DECLARATION OF INTERESTS

The authors declare no competing interests.

Received: June 10, 2020

Revised: July 23, 2020

Accepted: August 27, 2020

Published: September 22, 2020

REFERENCES

- Adzhubei, I.A., Schmidt, S., Peshkin, L., Ramensky, V.E., Gerasimova, A., Bork, P., Kondrashov, A.S., and Sunyaev, S.R. (2010). A method and server for predicting damaging missense mutations. *Nat. Methods* 7, 248–249.
- Altschul, S.F., Madden, T.L., Schäffer, A.A., Zhang, J., Zhang, Z., Miller, W., and Lipman, D.J. (1997). Gapped BLAST and PSI-BLAST: a new generation of protein database search programs. *Nucleic Acids Res.* 25, 3389–3402.
- Ashkenazy, H., Abadi, S., Martz, E., Chay, O., Mayrose, I., Pupko, T., and Ben-Tal, N. (2016). ConSurf 2016: an improved methodology to estimate and visualize evolutionary conservation in macromolecules. *Nucleic Acids Res.* 44, W344–W350.
- Aune, C.N., Chatterjee, B., Zhao, X.Q., Francis, R., Bracero, L., Yu, Q., Rosenthal, J., Leatherbury, L., and Lo, C.W. (2008). Mouse model of heterotaxy with single ventricle spectrum of cardiac anomalies. *Pediatr. Res.* 63, 9–14.
- Van der Auwera, G.A., Carneiro, M.O., Hartl, C., Poplin, R., Del Angel, G., Levy-Moonshine, A., Jordan, T., Shakir, K., Roazen, D., Thibault, J., et al. (2013). From FastQ data to high confidence variant calls: the genome analysis toolkit best practices pipeline. *Curr Protoc Bioinformatics* 43, 11.10.1–11.10.33.
- Badano, J.L., Mitsuma, N., Beales, P.L., and Katsanis, N. (2006). The ciliopathies: an emerging class of human genetic disorders. *Annu. Rev. Genomics Hum. Genet.* 7, 125–148.
- Berberi, N.F., Johnson, A.D., Lewis, J.S., Askwith, C.C., and Mykityn, K. (2008). Identification of ciliary localization sequences within the third intracellular loop of G protein-coupled receptors. *Mol. Biol. Cell* 19, 1540–1547.
- Bishop, B., Aricescu, A.R., Harlos, K., O’Callaghan, C.A., Jones, E.Y., and Siebold, C. (2009). Structural insights into hedgehog ligand sequestration by the human hedgehog-interacting protein HHIP. *Nat. Struct. Mol. Biol.* 16, 698–703.
- Bjarnadóttir, T.K., Gloriam, D.E., Hellstrand, S.H., Kristiansson, H., Fredriksson, R., and Schiöth, H.B. (2006). Comprehensive repertoire and phylogenetic analysis of the G protein-coupled receptors in human and mouse. *Genomics* 88, 263–273.
- Byrne, E.F.X., Sircar, R., Miller, P.S., Hedger, G., Luchetti, G., Nachtergaele, S., Tully, M.D., Mydock-McGrane, L., Covey, D.F., Rambo, R.P., et al. (2016). Structural basis of smoothed regulation by its extracellular domains. *Nature* 535, 517–522.
- Campeau, E., Ruhl, V.E., Rodier, F., Smith, C.L., Rahmberg, B.L., Fuss, J.O., Campisi, J., Yaswen, P., Cooper, P.K., and Kaufman, P.D. (2009). A versatile viral system for expression and depletion of proteins in mammalian cells. *PLoS One* 4, e6529.
- Chakrabarti, O., and Hegde, R.S. (2009). Functional depletion of mahogunin by cytosolically exposed prion protein contributes to neurodegeneration. *Cell* 137, 1136–1147.
- Cooper, A.F., Yu, K.P., Brueckner, M., Brailey, L.L., Johnson, L., McGrath, J.M., and Bale, A.E. (2005). Cardiac and CNS defects in a mouse with targeted disruption of suppressor of fused. *Development* 132, 4407–4417.
- Cooray, S.N., Guasti, L., and Clark, A.J.L. (2011). The E3 ubiquitin ligase Mahogunin ubiquitinates the melanocortin 2 receptor. *Endocrinology* 152, 4224–4231.
- Corbit, K.C., Aanstad, P., Singla, V., Norman, A.R., Stainier, D.Y., and Reiter, J.F. (2005). Vertebrate smoothed functions at the primary cilium. *Nature* 437, 1018–1021.
- Cota, C.D., Bagher, P., Pelc, P., Smith, C.O., Bodner, C.R., and Gunn, T.M. (2006). Mice with mutations in Mahogunin ring finger-1 (*Mgrn1*) exhibit abnormal patterning of the left-right axis. *Dev. Dyn.* 235, 3438–3447.
- Crooks, G.E., Hon, G., Chandonia, J.M., and Brenner, S.E. (2004). WebLogo: a sequence logo generator. *Genome Res.* 14, 1188–1190.
- DePristo, M.A., Banks, E., Poplin, R., Garimella, K.V., Maguire, J.R., Hartl, C., Philippakis, A.A., del Angel, G., Rivas, M.A., Hanna, M., et al. (2011). A framework for variation discovery and genotyping using next-generation DNA sequencing data. *Nat. Genet.* 43, 491–498.
- Desai, P.B., Stuck, M.W., Lv, B., and Pazour, G.J. (2020). Ubiquitin links smoothed to intraflagellar transport to regulate Hedgehog signaling. *J. Cell Biol.* 219.
- Dickinson, M.E., Flenniken, A.M., Ji, X., Teboul, L., Wong, M.D., White, J.K., Meehan, T.F., Weninger, W.J., Westerberg, H., Adissu, H., et al. (2016). High-throughput discovery of novel developmental phenotypes. *Nature* 537, 508–514.
- Dorn, K.V., Hughes, C.E., and Rohatgi, R. (2012). A smoothed-Evc2 complex transduces the hedgehog signal at primary cilia. *Dev. Cell* 23, 823–835.
- Durkin, M.E., Qian, X., Popescu, N.C., and Lowy, D.R. (2013). Isolation of mouse embryo fibroblasts. *Bio Protoc.* 3 e908.
- Dyer, L.A., and Kirby, M.L. (2009). Sonic hedgehog maintains proliferation in secondary heart field progenitors and is required for normal arterial pole formation. *Dev. Biol.* 330, 305–317.
- Engelhard, C., Sarsfield, S., Merte, J., Wang, Q., Li, P., Beppu, H., Kolodkin, A.L., Suvov, H.M., and Ginty, D.D. (2013). MEGF8 is a modifier of BMP signaling in trigeminal sensory neurons. *eLife* 2, e01160.
- Garcia-Barcelona, C., Osinalde, N., Ramirez, J., and Mayor, U. (2020). How to inactivate human ubiquitin E3 ligases by mutation. *Front. Cell Dev. Biol.* 8, 39.
- Gifford, C.A., Ranade, S.S., Samarakoon, R., Salunga, H.T., de Soysa, T.Y., Huang, Y., Zhou, P., Eifenbein, A., Wyman, S.K., Bui, Y.K., et al. (2019). Oligogenic inheritance of a human heart disease involving a genetic modifier. *Science* 364, 865–870.
- Guerra, D.D., Pratelli, R., Kraft, E., Callis, J., and Pilot, G. (2013). Functional conservation between mammalian MGRN1 and plant LOG2 ubiquitin ligases. *FEBS Lett.* 587, 3400–3405.
- Gunn, T.M., Miller, K.A., He, L., Hyman, R.W., Davis, R.W., Azarani, A., Schlossman, S.F., Duke-Cohan, J.S., and Barsh, G.S. (1999). The mouse mahogany locus encodes a transmembrane form of human attractin. *Nature* 398, 152–156.
- Gunn, T.M., Silviu, D., Bagher, P., Sun, K., and Walker, K.K. (2013). MGRN1-dependent pigment-type switching requires its ubiquitination activity but not its interaction with TSG101 or NEDD4. *Pigment Cell Melanoma Res.* 26, 263–268.
- Gunn, T.M., Silviu, D., Lester, A., and Gibbs, B. (2019). Chronic and age-dependent effects of the spongiform neurodegeneration-associated MGRN1 E3 ubiquitin ligase on mitochondrial homeostasis. *Mamm. Genome* 30, 151–165.
- Hao, H.X., Xie, Y., Zhang, Y., Charlat, O., Oster, E., Avello, M., Lei, H., Mickanin, C., Liu, D., Ruffner, H., et al. (2012). ZNRF3 promotes Wnt receptor turnover in an R-spondin-sensitive manner. *Nature* 485, 195–200.
- Haqq, A.M., René, P., Kishi, T., Khong, K., Lee, C.E., Liu, H., Friedman, J.M., Elmquist, J.K., and Cone, R.D. (2003). Characterization of a novel binding partner of the melanocortin-4 receptor: attractin-like protein. *Biochem. J.* 376, 595–605.
- Harfe, B.D., Scherz, P.J., Nissim, S., Tian, H., McMahon, A.P., and Tabin, C.J. (2004). Evidence for an expansion-based temporal Shh gradient in specifying vertebrate digit identities. *Cell* 118, 517–528.
- He, L., Lu, X.Y., Jolly, A.F., Eldridge, A.G., Watson, S.J., Jackson, P.K., Barsh, G.S., and Gunn, T.M. (2003). Spongiform degeneration in mahoganoid mutant mice. *Science* 299, 710–712.
- Heyne, G.W., Melberg, C.G., Doroodchi, P., Parins, K.F., Kietzman, H.W., Everson, J.L., Ansen-Wilson, L.J., and Lipinski, R.J. (2015). Definition of critical

- periods for Hedgehog pathway antagonist-induced holoprosencephaly, cleft lip, and cleft palate. *PLoS One* 10, e0120517.
- Hoang, D.T., Chernomor, O., von Haeseler, A., Minh, B.Q., and Vinh, L.S. (2018). UFBBoot2: improving the ultrafast bootstrap approximation. *Mol. Biol. Evol.* 35, 518–522.
- Hoffmann, A.D., Peterson, M.A., Friedland-Little, J.M., Anderson, S.A., and Moskowitz, I.P. (2009). sonic hedgehog is required in pulmonary endoderm for atrial septation. *Development* 136, 1761–1770.
- Jiao, J., Sun, K., Walker, W.P., Bagher, P., Cota, C.D., and Gunn, T.M. (2009). Abnormal regulation of TSG101 in mice with spongiform neurodegeneration. *Biochim. Biophys. Acta* 1792, 1027–1035.
- Jin, S.C., Homsy, J., Zaidi, S., Lu, Q., Morton, S., DePalma, S.R., Zeng, X., Qi, H., Chang, W., Sierant, M.C., et al. (2017). Contribution of rare inherited and de novo variants in 2,871 congenital heart disease probands. *Nat. Genet.* 49, 1593–1601.
- Kalyaanamoorthy, S., Minh, B.Q., Wong, T.K.F., von Haeseler, A., and Jermini, L.S. (2017). ModelFinder: fast model selection for accurate phylogenetic estimates. *Nat. Methods* 14, 587–589.
- Katsanis, N., Beales, P.L., Woods, M.O., Lewis, R.A., Green, J.S., Parfrey, P.S., Ansley, S.J., Davidson, W.S., and Lupski, J.R. (2000). Mutations in MKKS cause obesity, retinal dystrophy and renal malformations associated with Bardet-Biedl syndrome. *Nat. Genet.* 26, 67–70.
- Kircher, M., Witten, D.M., Jain, P., O’Roak, B.J., Cooper, G.M., and Shendure, J. (2014). A general framework for estimating the relative pathogenicity of human genetic variants. *Nat. Genet.* 46, 310–315.
- Koo, B.K., Spit, M., Jordens, I., Low, T.Y., Stange, D.E., van de Wetering, M., van Es, J.H., Mohammed, S., Heck, A.J.R., Maurice, M.M., and Clevers, H. (2012). Tumour suppressor RNF43 is a stem-cell E3 ligase that induces endocytosis of Wnt receptors. *Nature* 488, 665–669.
- Kousi, M., and Katsanis, N. (2015). Genetic modifiers and oligogenic inheritance. *Cold Spring Harb. Perspect. Med.* 5, a017145.
- Kumar, P., Henikoff, S., and Ng, P.C. (2009). Predicting the effects of coding non-synonymous variants on protein function using the SIFT algorithm. *Nat. Protoc.* 4, 1073–1081.
- Lassmann, T., Frings, O., and Sonnhammer, E.L.L. (2009). Kalign2: high-performance multiple alignment of protein and nucleotide sequences allowing external features. *Nucleic Acids Res* 37, 858–865.
- Levin, M., Johnson, R.L., Stern, C.D., Kuehn, M., and Tabin, C. (1995). A molecular pathway determining left-right asymmetry in chick embryogenesis. *Cell* 82, 803–814.
- Li, H., and Durbin, R. (2009). Fast and accurate short read alignment with Burrows–Wheeler transform. *Bioinformatics* 25, 1754–1760.
- Lim, K.L., Chew, K.C.M., Tan, J.M.M., Wang, C., Chung, K.K.K., Zhang, Y., Tanaka, Y., Smith, W., Engelender, S., Ross, C.A., et al. (2005). Parkin mediates nonclassical, proteasomal-independent ubiquitination of synphilin-1: implications for Lewy body formation. *J. Neurosci.* 25, 2002–2009.
- Lin, A.E., Krikov, S., Riehle-Colarusso, T., Frias, J.L., Belmont, J., Anderka, M., Geva, T., Getz, K.D., Botto, L.D., and Study, N.B.D.P. (2014). Laterality defects in the national birth defects prevention study (1998–2007): birth prevalence and descriptive epidemiology. *Am. J. Med. Genet.* 164, 2581–2591.
- Lipinski, R.J., Holloway, H.T., O’Leary-Moore, S.K., Ament, J.J., Pecevich, S.J., Cofer, G.P., Budin, F., Everson, J.L., Johnson, G.A., and Sulik, K.K. (2014). Characterization of subtle brain abnormalities in a mouse model of Hedgehog pathway antagonist-induced cleft lip and palate. *PLoS One* 9, e102603.
- Litingtung, Y., Dahn, R.D., Li, Y., Fallon, J.F., and Chiang, C. (2002). Shh and Gli3 are dispensable for limb skeleton formation but regulate digit number and identity. *Nature* 418, 979–983.
- Liu, X., Chen, W., Li, W., Priest, J.R., Fu, Y., Pang, K., Ma, B., Han, B., Liu, X., Hu, S., and Zhou, Z. (2020). Exome-based case-control analysis highlights the pathogenic role of ciliary genes in transposition of the great arteries. *Circ. Res.* 126, 811–821.
- Liu, X., Tobita, K., Francis, R.J., and Lo, C.W. (2013). Imaging techniques for visualizing and phenotyping congenital heart defects in murine models. *Birth Defects Res. C Embryo Today* 99, 93–105.
- Liu, X., Yagi, H., Saeed, S., Bais, A.S., Gabriel, G.C., Chen, Z., Peterson, K.A., Li, Y., Schwartz, M.C., Reynolds, W.T., et al. (2017). The complex genetics of hypoplastic left heart syndrome. *Nat. Genet.* 49, 1152–1159.
- Milenkovic, L., Scott, M.P., and Rohatgi, R. (2009). Lateral transport of smoothed from the plasma membrane to the membrane of the cilium. *J. Cell Biol.* 187, 365–374.
- Nagle, D.L., McGrail, S.H., Vitale, J., Woolf, E.A., Dussault, B.J., Jr., DiRocco, L., Holmgren, L., Montagnò, J., Bork, P., Huszar, D., et al. (1999). The mahogany protein is a receptor involved in suppression of obesity. *Nature* 398, 148–152.
- Nguyen, L.T., Schmidt, H.A., von Haeseler, A., and Minh, B.Q. (2015). IQ-TREE: a fast and effective stochastic algorithm for estimating maximum-likelihood phylogenies. *Mol. Biol. Evol.* 32, 268–274.
- Phillips, R.J. (1963). New mutant: non-agouti curly. *Mouse News Lett.* 29, 38.
- Pradat, P., Francannet, C., Harris, J.A., and Robert, E. (2003). The epidemiology of cardiovascular defects, part I: a study based on data from three large registries of congenital malformations. *Pediatr. Cardiol.* 24, 195–221.
- Priest, J.R., Osoegawa, K., Mohammed, N., Nanda, V., Kundu, R., Schultz, K., Lammer, E.J., Girirajan, S., Scheetz, T., Waggott, D., et al. (2016). De novo and rare variants at multiple loci support the oligogenic origins of atrioventricular septal heart defects. *PLoS Genet* 12, e1005963.
- Pusapati, G.V., Hughes, C.E., Dorn, K.V., Zhang, D., Sugianto, P., Aravind, L., and Rohatgi, R. (2014). EFCAB7 and IQCE regulate hedgehog signaling by tethering the EVC-EVC2 complex to the base of primary cilia. *Dev. Cell* 28, 483–496.
- Pusapati, G.V., Kong, J.H., Patel, B.B., Krishnan, A., Sagner, A., Kinnebrew, M., Briscoe, J., Aravind, L., and Rohatgi, R. (2018). CRISPR screens uncover genes that regulate target cell sensitivity to the morphogen sonic hedgehog. *Dev. Cell* 44, 271.
- Ran, F.A., Hsu, P.D., Wright, J., Agarwala, V., Scott, D.A., and Zhang, F. (2013). Genome engineering using the CRISPR–Cas9 system. *Nat. Protoc.* 8, 2281–2308.
- Riddle, R.D., Johnson, R.L., Laufer, E., and Tabin, C. (1993). Sonic hedgehog mediates the polarizing activity of the ZPA. *Cell* 75, 1401–1416.
- Rio, D.C., Ares, M., Jr., Hannon, G.J., and Nilsen, T.W. (2010). Purification of RNA using Trizol (TRI reagent). *Cold Spring Harb. Protoc.* 2010, pdb.prot5439.
- Rivera, G.M., Vasilescu, D., Papayannopoulos, V., Lim, W.A., and Mayer, B.J. (2009). A reciprocal interdependence between Nck and PI(4,5)P(2) promotes localized N-WASP-mediated actin polymerization in living cells. *Mol. Cell* 36, 525–535.
- Rohatgi, R., Milenkovic, L., and Scott, M.P. (2007). Patched1 regulates hedgehog signaling at the primary cilium. *Science* 317, 372–376.
- Rosset, A., Spadola, L., and Ratib, O. (2004). OsiriX: an open-source software for navigating in multidimensional DICOM images. *J. Digit. Imaging* 17, 205–216.
- Sagner, A., Gaber, Z.B., Delile, J., Kong, J.H., Rousso, D.L., Pearson, C.A., Weicksel, S.E., Melchionda, M., Mousavy Gharavy, S.N., Briscoe, J., and Novitsch, B.G. (2018). Olig2 and Hes regulatory dynamics during motor neuron differentiation revealed by single cell transcriptomics. *PLoS Biol.* 16, e2003127.
- Schindelin, J., Arganda-Carreras, I., Frise, E., Kaynig, V., Longair, M., Pietzsch, T., Preibisch, S., Rueden, C., Saalfeld, S., Schmid, B., et al. (2012). Fiji: an open-source platform for biological-image analysis. *Nat. Methods* 9, 676–682.
- Shinde, S.R., Nager, A.R., and Nachury, M.V. (2020). Lysine63-linked ubiquitin chains earmark GPCRs for BBSome-mediated removal from cilia. [bioRxiv preprint doi: <https://doi.org/10.1101/2020.03.04.977090>; this version posted March 4, 2020. The copyright holder for this preprint \(which was not certified by peer review\) is the author/funder, who has granted bioRxiv a license to display the preprint in perpetuity. It is made available under aCC-BY-NC-ND 4.0 International license.](https://doi.org/10.1101/2020.03.04.977090)

- Stamatakis, D., Ulloa, F., Tsoni, S.V., Mynett, A., and Briscoe, J. (2005). A gradient of Gli activity mediates graded Sonic Hedgehog signaling in the neural tube. *Genes Dev.* *19*, 626–641.
- te Welscher, P., Zuniga, A., Kuijper, S., Drenth, T., Goedemans, H.J., Meijlink, F., and Zeller, R. (2002). Progression of vertebrate limb development through SHH-mediated counteraction of GLI3. *Science* *298*, 827–830.
- Tröder, S.E., Ebert, L.K., Butt, L., Assenmacher, S., Schermer, B., and Zevnik, B. (2018). An optimized electroporation approach for efficient CRISPR/Cas9 genome editing in murine zygotes. *PLoS One* *13*, e0196891.
- Tsiairis, C.D., and McMahon, A.P. (2009). An Hh-dependent pathway in lateral plate mesoderm enables the generation of left/right asymmetry. *Curr. Biol.* *19*, 1912–1917.
- Twigg, S.R., Lloyd, D., Jenkins, D., Elçioglu, N.E., Cooper, C.D., Al-Sanna, N., Annagür, A., Gillessen-Kaesbach, G., Hüning, I., Knight, S.J.L., et al. (2012). Mutations in multidomain protein MEGF8 identify a Carpenter syndrome subtype associated with defective lateralization. *Am. J. Hum. Genet.* *91*, 897–905.
- UniProt Consortium (2019). UniProt: a worldwide hub of protein knowledge. *Nucleic Acids Res.* *47*, D506–D515.
- Veitia, R.A. (2010). A generalized model of gene dosage and dominant negative effects in macromolecular complexes. *FASEB J.* *24*, 994–1002.
- Veitia, R.A., Bottani, S., and Birchler, J.A. (2013). Gene dosage effects: nonlinearities, genetic interactions, and dosage compensation. *Trends Genet.* *29*, 385–393.
- Walker, W. (2010). Studies of the pigment-type switching genes *ATRN* and *MGRN1*: evidence for a defect in endosomal/lysosomal protein trafficking as a cause of hyperpigmentation and spongiform neurodegeneration, Phd Dissertation (Cornell University).
- Washington Smoak, I., Byrd, N.A., Abu-Issa, R., Goddeeris, M.M., Anderson, R., Morris, J., Yamamura, K., Klingensmith, J., and Meyers, E.N. (2005). Sonic hedgehog is required for cardiac outflow tract and neural crest cell development. *Dev. Biol.* *283*, 357–372.
- Zhang, X.M., Ramalho-Santos, M., and McMahon, A.P. (2001). Smoothed mutants reveal redundant roles for Shh and Ihh signaling including regulation of L/R symmetry by the mouse node. *Cell* *106*, 781–792.
- Zhang, Z., Alpert, D., Francis, R., Chatterjee, B., Yu, Q., Tansey, T., Sabol, S.L., Cui, C., Bai, Y., Koriabine, M., et al. (2009). Massively parallel sequencing identifies the gene *Megf8* with ENU-induced mutation causing heterotaxy. *Proc. Natl. Acad. Sci. USA* *106*, 3219–3224.
- Zhao, Z., Lee, R.T.H., Pusapati, G.V., Iyu, A., Rohatgi, R., and Ingham, P.W. (2016). An essential role for *Grk2* in Hedgehog signalling downstream of smoothed. *EMBO Rep.* *17*, 739–752.

## STAR★METHODS

## KEY RESOURCES TABLE

REAGENT or RESOURCE	SOURCE	IDENTIFIER
<b>Antibodies</b>		
Mouse monoclonal anti-1D4	The University of British Columbia	RRID: AB_325050
Guinea pig polyclonal anti-ARL13B	<a href="#">Dorn et al., 2012</a>	N/A
Mouse monoclonal anti-CD16 (clone 3G8)	Santa Cruz Biotechnology	Cat#sc-19620; RRID: AB_626924
Mouse monoclonal anti-CD16 (clone DJ130c)	Santa Cruz Biotechnology	Cat#sc-20052; RRID: AB_626925
Mouse monoclonal anti-FLAG (clone M2)	MilliporeSigma	Cat#F1804; RRID: AB_26204
Mouse monoclonal anti-GLI1 (clone L42B10)	Cell Signaling	Cat#2643; RRID: AB_2294746
Goat polyclonal anti-GFP	Rockland Immunochemicals	Cat#600-101-215; RRID: AB_218182
Rabbit polyclonal anti-GFP	Novus Biologicals	Cat#NB600-308; RRID: AB_10003058
Mouse monoclonal anti-HA.11 (clone 16B12)	Biologend	Cat#901513; RRID: AB_256335
Mouse monoclonal anti-HA (clone 2-2.2.14)	Thermo Fisher Scientific (Invitrogen)	Cat#26183; RRID: AB_10978021
Rabbit polyclonal anti-MEGF8	This paper	N/A
Rabbit polyclonal anti-p38	Abcam	Cat#ab7952; RRID: AB_306166
Rabbit polyclonal anti-RNF156 (anti-MGRN1)	Proteintech	Cat#11285-1-AP; RRID: AB_2143351
Rabbit polyclonal anti-SMO	<a href="#">Rohatgi et al., 2007</a>	N/A
Rabbit polyclonal anti-SMO-N	<a href="#">Milenkovic et al., 2009</a>	N/A
Mouse monoclonal anti- $\alpha$ -Tubulin (clone DM1A)	MilliporeSigma	Cat#T6199; RRID: AB_477583
Mouse monoclonal anti-Tubulin, acetylated	MilliporeSigma	Cat#T6793; RRID: AB_477585
Peroxidase AffiniPure Donkey Anti-Mouse IgG (H+L)	Jackson ImmunoResearch Laboratories	Cat#715-035-150; RRID: AB_2340770
Peroxidase AffiniPure Donkey Anti-Rabbit IgG (H+L)	Jackson ImmunoResearch Laboratories	Cat#111-035-144; RRID: AB_2307391
Peroxidase AffiniPure Donkey Anti-Goat IgG (H+L)	Jackson ImmunoResearch Laboratories	Cat#705-035-003; RRID: AB_2340390
Donkey anti-Rabbit IgG (H+L) Highly Cross-Adsorbed Secondary Antibody, Alexa Fluor 488	Thermo Fisher Scientific (Invitrogen)	Cat#A-21206; RRID: AB_2535792
Donkey anti-Rabbit IgG (H+L) Highly Cross-Adsorbed Secondary Antibody, Alexa Fluor 594	Thermo Fisher Scientific (Invitrogen)	Cat#A-21207; RRID: AB_141637
Donkey anti-Mouse IgG (H+L) Secondary Antibody, Alexa Fluor 488	Thermo Fisher Scientific (Invitrogen)	Cat#A-21202; RRID: AB_141607
Donkey anti-Mouse IgG (H+L) Secondary Antibody, Alexa Fluor 647	Thermo Fisher Scientific (Invitrogen)	Cat#A-31571; RRID: AB_162542
Alexa Fluor 488 AffiniPure Donkey Anti-Guinea Pig IgG (H+L)	Jackson ImmunoResearch Laboratories	Cat#706-545-148; RRID: AB_2340472
Alexa Fluor 647 AffiniPure Donkey Anti-Guinea Pig IgG (H+L)	Jackson ImmunoResearch Laboratories	Cat#706-605-148; RRID: AB_2340476
<b>Bacterial and Virus Strains</b>		
Rosetta2(DE3)pLysS competent cells	MilliporeSigma (Novagen)	Cat#71403
<b>Biological Samples</b>		
Patient derived fibroblast cultures	Children's Hospital of Pittsburgh (University of Pittsburgh)	N/A
<b>Chemicals, Peptides, and Recombinant Proteins</b>		
2-Mercaptoethanol	Thermo Fisher Scientific (Gibco)	Cat#31350010
Bafilomycin A1	Cayman Chemical	Cat#11038
Bortezomib, Free Base	LC Laboratories	Cat#B-1408
Cas9 2NLS Nuclease	Synthego	N/A
CHIR 99021	Axon Medchem	Cat#Axon 1386
Recombinant mouse FGF basic/FGF2/bFGF protein	R&D Systems	Cat#31339-FB
Hygromycin B (50 mg/ml in solution, Ultra Pure Grade)	VWR Life Science	Cat#97064-454

(Continued on next page)



**Continued**

REAGENT or RESOURCE	SOURCE	IDENTIFIER
Hoechst 33342 solution (20uM)	Thermo Fisher Scientific	Cat#62249
ESGRO recombinant mouse leukemia inhibitory factor (LIF) protein	MilliporeSigma	Cat#ESG1106
EZ-Link Sulfo-NHS-SS-Biotin	Thermo Fisher Scientific	Cat#21331
Gateway LR Clonase II enzyme	Thermo Fisher Scientific (Invitrogen)	Cat#11791020
Gibson Assembly Master Mix	New England Biolabs	Cat#E2611
GoTaq Green Master Mix	Promega Corporation	Cat#M712
Methyl cellulose (viscosity: 4000 cP)	MilliporeSigma	Cat#M0512
N-Ethylmaleimide	MilliporeSigma	Cat#E3876
PD 98059	Axon Medchem	Cat#Axon 1223
Penicillin:Streptomycin solution	Gemini Bioproducts	Cat#400-109
PhosSTOP	MilliporeSigma	Cat#PHOSS-RO
Polyethylenimine (PEI), Linear, MW 25000, Transfection Grade	Polysciences	Cat#23966-1
Retinoic Acid	MilliporeSigma	Cat#R2625
Polybrene (Hexadimethrine bromide)	MilliporeSigma	Cat#107689
Puromycin dihydrochloride	MilliporeSigma	Cat#P8833
SAG (Smoothed agonist)	Enzo Life Sciences	Cat#NC9953751
SIGMAFAST protease inhibitor tablets	MilliporeSigma	Cat# S8820
Sonic hedgehog (recombinant)	<a href="#">Bishop et al., 2009</a>	N/A
Vismodegib, Free Base	LC Laboratories	Cat#V-4050
X-tremeGENE 9 DNA transfection reagent	Roche Molecular Systems	Cat#XTG9-RO
B-27 Supplement (50x), minus antioxidants	Thermo Fisher Scientific (Gibco)	Cat#10889038
Bovine serum albumin solution (30% in DPBS)	MilliporeSigma	Cat#A9576
Bovine serum albumin	MilliporeSigma	Cat#A3059
Dulbecco's Modified Eagles Medium (DMEM) high glucose without L-glutamine and sodium pyruvate (Hyclone)	Thermo Fisher Scientific (Gibco)	Cat#SH30081FS
Dulbecco's Modified Eagles Medium (DMEM)/F12, no glutamine	Thermo Fisher Scientific (Gibco)	Cat#21331020
Dynabeads Protein A for immunoprecipitation	Thermo Fisher Scientific (Invitrogen)	Cat#10002D
Dynabeads M-270 carboxylic acid	Thermo Fisher Scientific (Invitrogen)	Cat#14305D
EmbryoMax advanced KSOM embryo medium	MilliporeSigma	Cat#MR-101-D
EmbryoMax nucleosides (100x)	MilliporeSigma	Cat#ES-008-D
L-glutamine solution	Gemini Bioproducts	Cat#400-106
MEM Non-essential amino acids solution	Thermo Fisher Scientific (Gibco)	Cat#11140050
N-2 Supplement (100x)	Thermo Fisher Scientific (Gibco)	Cat#17502048
Neurobasal Medium	Thermo Fisher Scientific (Gibco)	Cat#21103049
NuPAGE-LDS sample buffer (4X)	Thermo Fisher Scientific (Invitrogen)	Cat#NP0007
Opti-MEM reduced serum medium	Thermo Fisher Scientific (Gibco)	Cat#3985062
RPMI medium	Thermo Fisher Scientific (Gibco)	Cat#11875135
Sodium pyruvate	Thermo Fisher Scientific (Gibco)	Cat#11360070
Streptavidin agarose ultra performance resin	TriLink Biotechnologies	Cat#N-1000
Tissue-Plus OCT compound	Thermo Fisher Scientific	Cat#23-730-571
TRIzol reagent	Thermo Fisher Scientific (Invitrogen)	Cat#15596026
Trypsin-EDTA solution (0.05%), phenol red	Gemini Bioproducts	Cat#400-150
Trypsin-EDTA solution (0.25%), phenol red	Thermo Fisher Scientific (Gibco)	Cat#25200072
<b>Critical Commercial Assays</b>		
SureSelect XT Human All Exon V4	Agilent	Cat#5190-4635
Direct-zol RNA miniprep kit	Zymo Research	Cat#R2050

(Continued on next page)

**Continued**

REAGENT or RESOURCE	SOURCE	IDENTIFIER
RNeasy Plus Mini Kit	Qiagen	Cat#74134
High-capacity RNA-to-cDNA kit	Thermo Fisher Scientific (Applied Biosystems)	Cat#4387406
iScript reverse transcription supermix for RT-qPCR	Bio-rad Laboratories	Cat#1708840
SuperScript III first-strand synthesis system	Thermo Fisher Scientific (Invitrogen)	Cat#18080051
PAXgene blood DNA kit	Qiagen	Cat#761133
Mouse embryonic stem cell nucleofector kit	Lonza Bioscience	Cat#VAPH-1001
Universal mycoplasma detection kit	ATCC	Cat#30-1012K
<b>Experimental Models: Cell Lines</b>		
Flp-In-3T3	Thermo Fisher Scientific	Cat#R76107
293T	ATCC	Cat#CRL-3216
HM1 mESC cells with dual reporters (Olig2::T2A-mKate2 and 8xGBS-H2B::Venus)	<a href="#">Sagner et al., 2018</a>	N/A
NIH/3T3-Flp In <i>Megf8</i> <sup>-/-</sup>	<a href="#">Pusapati et al., 2018</a>	N/A
NIH/3T3-Flp In <i>Megf8</i> <sup>-/-</sup> + <i>MEGF8</i> -1D4	This paper	N/A
NIH/3T3-Flp In <i>Megf8</i> <sup>-/-</sup> + <i>MEGF8</i> <sup>ΔN</sup> -1D4	This paper	N/A
NIH/3T3-Flp In <i>Megf8</i> <sup>-/-</sup> + <i>MEGF8</i> <sup>ΔCtail</sup> -1D4	This paper	N/A
NIH/3T3-Flp In <i>Megf8</i> <sup>-/-</sup> + <i>MEGF8</i> <sup>ΔMASRPFA</sup> -1D4	This paper	N/A
NIH/3T3-Flp In <i>Megf8</i> <sup>-/-</sup> + CD16 <sup>ECD</sup> - <i>CD7</i> <sup>TM</sup> - <i>MEGF8</i> <sup>Ctail</sup> -1D4	This paper	N/A
NIH/3T3-Flp In <i>Megf8</i> <sup>-/-</sup> + CD16 <sup>ECD</sup> - <i>MEGF8</i> <sup>TM+Ctail</sup> -1D4	This paper	N/A
NIH/3T3-Flp In <i>Megf8</i> <sup>-/-</sup> + CD16 <sup>ECD</sup> - <i>MEGF8</i> <sup>TM+CtailΔMASRPFA</sup> -1D4	This paper	N/A
NIH/3T3-Flp In <i>Mgrn1</i> <sup>-/-</sup>	<a href="#">Pusapati et al., 2018</a>	N/A
NIH/3T3-Flp In <i>Mgrn1</i> <sup>-/-</sup> ; <i>Rnf157</i> <sup>-/-</sup>	This paper	N/A
NIH/3T3-Flp In <i>Mgrn1</i> <sup>-/-</sup> ; <i>Rnf157</i> <sup>-/-</sup> + <i>Mgrn1</i> -3xFLAG	This paper	N/A
NIH/3T3-Flp In <i>Mgrn1</i> <sup>-/-</sup> ; <i>Rnf157</i> <sup>-/-</sup> + <i>Mgrn1</i> <sup>Mut1</sup> -3xFLAG	This paper	N/A
NIH/3T3-Flp In <i>Mgrn1</i> <sup>-/-</sup> ; <i>Rnf157</i> <sup>-/-</sup> + <i>Mgrn1</i> <sup>Mut1</sup> -3xFLAG	This paper	N/A
HM1 mESC <i>Mgrn1</i> <sup>-/-</sup> ; <i>Rnf157</i> <sup>-/-</sup>	This paper	N/A
<b>Experimental Models: Organisms/Strains</b>		
Mouse: <i>Mgrn1</i> <sup>m/m</sup> ; <i>Mgrn1</i> <sup>md-nc/md-nc</sup>	<a href="#">Phillips, 1963</a>	MGI#3704004
Mouse: <i>Megf8</i> <sup>m/m</sup> ; <i>Megf8</i> <sup>C193R/C193R</sup>	<a href="#">Zhang et al., 2009</a>	MGI#3722325
Mouse: <i>Rnf157</i> <sup>m/m</sup> ; <i>Rnf157</i> <sup>em1Tmg em1Tmg</sup>	This paper	N/A
<b>Oligonucleotides</b>		
<i>mGli1</i> and <i>mGapdh</i> qRT-PCR Primers, See <a href="#">Table S9</a>	<a href="#">Pusapati et al., 2018</a>	N/A
<i>hGLI1</i> and <i>hGAPDH</i> qRT-PCR Primers, See <a href="#">Table S9</a>	This paper	N/A
<i>mRnf157</i> qRT-PCR Primers, See <a href="#">Table S9</a>	This paper	N/A
<i>mGpi</i> qRT-PCR Primers (mice), See <a href="#">Table S9</a>	<a href="#">Gunn et al., 2013</a>	N/A
<i>mRnf157</i> genotyping PCR Primers (3T3 cells, neural progenitor cells, and mice), See <a href="#">Table S9</a>	This paper	N/A
<i>mRnf157</i> sgRNA target sequence PCR Primer (mice), See <a href="#">Table S9</a>	This paper	N/A
<i>Mgrn1</i> <sup>md-nc</sup> genotyping PCR primers, See <a href="#">Table S9</a>	<a href="#">Gunn et al., 2019</a>	N/A
<i>Megf8</i> <sup>C193R</sup> genotyping PCR Primers, See <a href="#">Table S9</a>	This paper	N/A
<b>Recombinant DNA</b>		
MGC premier cDNA clone for <i>MEGF8</i> (NM_001410.3)	Transomic Technologies, Inc	Cat#TCHS1003(BC153880 – glycerol stock)
pEF5/FRT/V5-DEST- <i>MEGF8</i> -1D4	This paper	N/A
pEF5/FRT/V5-DEST- <i>MEGF8</i> <sup>ΔCtail</sup> -1D4	This paper	N/A

(Continued on next page)

**Continued**

REAGENT or RESOURCE	SOURCE	IDENTIFIER
Mgrn1 (NM_001252437.1) gBlock	Integrated DNA Technologies	N/A
pEF5/FRT/V5-DEST- <i>Mgrn1</i> -3xFLAG	This paper	N/A
Smo <sup>KO</sup> gBlock fragment	Twist Bioscience	N/A
CD16 <sup>ECD</sup> -CD7 <sup>TM</sup> -mCherry-Nck-HA	<a href="#">Rivera et al., 2009</a>	N/A
pCS2-mSmo	<a href="#">Byrne et al., 2016</a>	N/A
pCS2-mSmo-eGFP	<a href="#">Zhao et al., 2016</a>	N/A
pEGFPN3-Sstr3	<a href="#">Berbari et al., 2008</a>	Addgene#35623
pEF5/FRT/V5-DEST gateway vector	Thermo Fisher Scientific	Cat#V602020
pLenti CMV Puro DEST	<a href="#">Campeau et al., 2009</a>	Addgene#17452
pLenti CMV Puro DEST- <i>MEGF8</i> -1D4	This paper	N/A
pLenti CMV Puro DEST- <i>MEGF8</i> <sup>ΔN</sup> -1D4	This paper	N/A
pLenti CMV Puro DEST- <i>MEGF8</i> <sup>ΔCtail</sup> -1D4	This paper	N/A
pLenti CMV Puro DEST- <i>MEGF8</i> <sup>ΔMASRPFA</sup> -1D4	This paper	N/A
pLenti CMV Puro DEST- <i>CD16</i> <sup>ECD</sup> - <i>CD7</i> <sup>TM</sup> - <i>MEGF8</i> <sup>Ctail</sup> -1D4	This paper	N/A
pLenti CMV Puro DEST- <i>CD16</i> <sup>ECD</sup> - <i>MEGF8</i> <sup>TM+Ctail</sup> -1D4	This paper	N/A
pLenti CMV Puro DEST- <i>CD16</i> <sup>ECD</sup> - <i>MEGF8</i> <sup>TM+CtailΔMASRPFA</sup> -1D4	This paper	N/A
pLenti CMV Puro DEST- <i>Mgrn1</i> -3xFLAG	This paper	N/A
pLenti CMV Puro DEST- <i>Mgrn1</i> <sup>Mut1</sup> -3xFLAG	This paper	N/A
pLenti CMV Puro DEST- <i>Mgrn1</i> <sup>Mut1</sup> -3xFLAG	This paper	N/A
pMD2.G	Didier Trono Lab (École Polytechnique fédérale de Lausanne)	Addgene#12259
psPAX2	Didier Trono Lab (École Polytechnique fédérale de Lausanne)	Addgene#12260
pOG44 Flp-Recombinase expression vector	Thermo Fisher Scientific (Invitrogen)	Cat#V600520
pRK5-HA-Ubiquitin-WT	<a href="#">Lim et al., 2005</a>	Addgene#17608
pRK5-HA-Ubiquitin-K0	<a href="#">Lim et al., 2005</a>	Addgene#17603
pSpCas9(BB)-2A-GFP (PX458)	<a href="#">Ran et al., 2013</a>	Addgene#48138
pSpCas9(BB)-2A-mCherry	<a href="#">Pusapati et al., 2018</a>	N/A
pSpCas9(BB)-2A-Puro (PX459)	<a href="#">Ran et al., 2013</a>	Addgene#48139
pGEX vector (modified with FseI/AsclI restriction enzyme cleavage sites)	GE Healthcare	N/A
pGEX- <i>MEGF8</i> -Ctail(2738-2778)	This paper	N/A
Software and Algorithms		
Adobe Illustrator CS6	Adobe Systems	<a href="https://adobe.com/products/illustrator.html">https://adobe.com/products/illustrator.html</a>
Adobe Photoshop CS6	Adobe System	<a href="https://adobe.com/products/photoshop.html">https://adobe.com/products/photoshop.html</a>
Benchling	Benchling	<a href="https://www.benchling.com">https://www.benchling.com</a>
BlastClust	National Center for Biological Information (NCBI)	<a href="ftp://ftp.ncbi.nih.gov/blast/documents/blastclust.html">ftp://ftp.ncbi.nih.gov/blast/documents/blastclust.html</a>
Broad Institute Genetic Perturbation Platform (GPP) sgRNA Designer	Broad Institute	<a href="https://portals.broadinstitute.org/gpp/public/analysis-tools/sgrna-design">https://portals.broadinstitute.org/gpp/public/analysis-tools/sgrna-design</a>
ConSurf	<a href="#">Ashkenazy et al., 2016</a>	<a href="https://consurf.tau.ac.il">https://consurf.tau.ac.il</a>
Fiji	<a href="#">Schindelin et al., 2012</a>	<a href="https://fiji.sc">https://fiji.sc</a>

(Continued on next page)

**Continued**

REAGENT or RESOURCE	SOURCE	IDENTIFIER
GraphPad Prism (version 8)	GraphPad Software	<a href="https://graphpad.com">https://graphpad.com</a>
IQ-TREE	<a href="#">Nguyen et al., 2015</a>	<a href="http://www.iqtree.org">http://www.iqtree.org</a>
Kalign2	<a href="#">Lassmann et al., 2009</a>	<a href="http://msa.sbc.su.se/">http://msa.sbc.su.se/</a>
Leica Application Suite X	Leica Microsystems	<a href="https://www.leica-microsystems.com/products/microscope-software/p/leica-las-x-ls/">https://www.leica-microsystems.com/products/microscope-software/p/leica-las-x-ls/</a>
Logo software	<a href="#">Crooks et al., 2004</a>	<a href="https://weblogo.berkeley.edu/logo.cgi">https://weblogo.berkeley.edu/logo.cgi</a>
ModelFinder	<a href="#">Kalyaanamoorthy et al., 2017</a>	<a href="http://www.iqtree.org">http://www.iqtree.org</a>
OsiriX software	<a href="#">Rosset et al., 2004</a>	<a href="https://osirix-viewer.com">https://osirix-viewer.com</a>
Position-Specific Iterated BLAST (PSI-BLAST) program	<a href="#">Altschul et al., 1997</a>	<a href="https://blast.ncbi.nlm.nih.gov/Blast.cgi?PAGE=Proteins">https://blast.ncbi.nlm.nih.gov/Blast.cgi?PAGE=Proteins</a>
SnapGene (version 4.3) software	GSL Biotech	<a href="https://snapgene.com">https://snapgene.com</a>
Synthego ICE analysis	Synthego Corporation	<a href="https://ice.synthego.com/#/">https://ice.synthego.com/#/</a>
UFBoot2 program	<a href="#">Hoang et al., 2018</a>	<a href="http://www.iqtree.org">http://www.iqtree.org</a>
UniProt Align software	The UniProt Consortium	<a href="https://uniprot.org/align">https://uniprot.org/align</a>

**RESOURCE AVAILABILITY****Lead Contact**

Further information and requests for resources and reagents should be directed to and will be fulfilled by the Lead Contact, Rajat Rohatgi ([rrohathgi@stanford.edu](mailto:rrohathgi@stanford.edu)).

**Materials Availability**

All unique/stable reagents generated in this study are available from the Lead Contact with a completed Materials Transfer Agreement.

**Data and Code Availability**

The published article contains all datasets generated and analyzed during this study.

**EXPERIMENTAL MODEL AND SUBJECT DETAILS****NIH/3T3 and HEK293T Cell Culture**

Flp-In-3T3 (a derivative of NIH/3T3 cells and referred to as “NIH/3T3” cells throughout the text) and HEK293T cell lines were purchased from Thermo Fisher Scientific and ATCC, respectively. Information on the gender of the cell lines is not available. NIH/3T3 and HEK293T cells were cultured in Complete Medium: Dulbecco’s Modified Eagle Medium (DMEM) containing high glucose (Thermo Fisher Scientific, Gibco) and supplemented with 10% fetal bovine serum (FBS) (MilliporeSigma), 2 mM L-Glutamine (Gemini Bioproducts), 1 mM sodium pyruvate (Thermo Fisher Scientific, Gibco), 1x MEM non-essential amino acids solution (Thermo Fisher Scientific, Gibco), and penicillin (40 U/ml) and streptomycin (40 μg/ml) (Gemini Bioproducts). The NIH/3T3 and HEK293T cells were passaged with 0.05% Trypsin/EDTA (Gemini Bioproducts). All cells were housed at 37 °C in a humidified atmosphere containing 5% CO<sub>2</sub>. Cell lines and derivatives were free of mycoplasma contamination as determined by PCR using the Universal Mycoplasma Detection Kit (ATCC).

**Generation of Primary Mouse Embryonic Fibroblasts**

Primary mouse embryonic fibroblasts (pMEFs) were generated using a modified published protocol ([Durkin et al., 2013](#)). Briefly, e12.5–14.5 embryos were harvested and rinsed thoroughly with PBS to remove any excess blood. Using forceps, the head and internal organs (heart and liver) were removed. The embryos were then separated into individual dishes and a sterile razor blade was used to physically mince the tissue in 0.25% Trypsin/EDTA (Thermo Fisher Scientific, Gibco). After pipetting the minced tissue up and down several times to further break up the tissue, the dishes were placed in a 37 °C tissue culture incubator for 10–15 min. If there were still large tissue pieces present, the minced tissue was pipetted further and the dish was placed in the incubator for an additional 5–10 min. The trypsin was then deactivated using Complete Medium (containing 10% FBS). The cells were then centrifuged, resuspended in fresh Complete Medium, and plated. Each clonal cell line represents pMEFs generated from a single embryo. The gender of the embryos were not determined prior to generating the pMEF cultures. Cells were housed at 37 °C in a humidified atmosphere containing 5% CO<sub>2</sub>.



### Patient Recruitment and Nasal Sampling for Patient Derived Fibroblast Cultures

Patients and parents were recruited from the Children's Hospital of Pittsburgh with informed consent obtained under a human study protocol approved by the University of Pittsburgh Institutional Review Board. Control, CHD patient, and parents recruited had blood drawn for DNA extraction. CHD diagnosis was confirmed with examination of the patient's medical records. Nasal tissue was obtained from the patient by curettage of the inferior nasal turbinate using a rhino probe. The nasal epithelial tissue was plated in RPMI medium (Thermo Fisher Scientific, Gibco) with 10% FBS (MilliporeSigma) and the fibroblast outgrowths that emerged were expanded and used for Hh signaling assays (below). Both primary fibroblast cell lines (control and patient 7501) were derived from cells collected from female patients.

### Hh Signaling Assays in NIH/3T3 Cells and Primary Fibroblasts

For Hh signaling assays, NIH/3T3 cells, pMEFs, and primary human fibroblasts were first grown to confluence in Complete Medium (containing 10% FBS) and then ciliated by changing the cell medium to Low Serum Medium (Complete Medium containing 0.5% FBS) for 24 h. Cells were treated with either no SHH, a low concentration of SHH (1 nM), a high concentration of SHH (25 nM), or SAG (100 nM) for at least 4 h prior to fixation (for NIH/3T3 immunofluorescence assays), 24 h prior to lysis (for NIH/3T3 Western blot assays or NIH/3T3 RNA extraction for qRT-PCR), or 48 h prior to experimentation (for pMEF and primary human fibroblast immunofluorescence, western blot, and qRT-PCR assays).

Hh signaling activity was measured using real-time quantitative reverse transcription PCR (qRT-PCR). RNA was extracted from NIH/3T3 cells and mouse pMEFs using TRIzol reagent (Thermo Fisher Scientific, Invitrogen) as previously described (Rio et al., 2010). Equal amounts of RNA were used as template for cDNA synthesis using the iScript Reverse Transcription Supermix (Bio-Rad Laboratories). qRT-PCR for *mGli1* and *mGapdh* was performed on a QuantStudio 5 Real-Time PCR System (Thermo Fisher Scientific) with the following custom designed primers: *mGli1* (Fwd 5'-CCAAGCCAACCTTATGTCAGGG-3' and Rev 5'-AGCCCGCTCTTTGTTAATTTGA-3') and *mGapdh* (Fwd 5'-AGTGGCAAAGTGGAGATT-3' and Rev 5'-GTGGAGTCATACTGGAACA-3'). Similarly, RNA was isolated from primary human fibroblasts using the RNeasy Plus Mini Kit (Qiagen). Equal amounts of RNA were used as template for human cDNA synthesis using the High-Capacity RNA-to-cDNA Kit (Thermo Fisher Scientific, Applied Biosystems). qRT-PCR for *hGLI1* and *hGAPDH* was performed on a 7900HT Real-Time PCR System (Life Technologies) with the following primers: *hGLI1* (Fwd 5'-CAGGGAGGAAAGCAGACTGA-3' and Rev 5'-ACTGCTGCAGGATGACTGG-3') and *hGAPDH* (Fwd 5'-GTCTCCTCTGACTTCAACAGCG-3' and Rev 5'-ACCACCCTGTTGCTGTAGCCAA-3'). For all qRT-PCR experiments, *Gli1* transcript levels were calculated relative to *Gapdh* and reported as a fold change across conditions using the comparative  $C_T$  method ( $\Delta\Delta C_T$  method).

### Neural Progenitor Differentiation Assay

Maintenance of HM1 mouse embryonic stem cells (mESCs) harboring the GLI-Venus and OLIG2-mKate dual reporter system and their differentiation into neural progenitor cells (NPCs) was performed as described previously (Pusapati et al., 2018). The parental HM1 mESC line was derived from a male mouse. mESCs were grown and maintained on feeder cells in mESC Medium: Dulbecco's Modified Eagle Medium (DMEM) containing high glucose (Thermo Fisher Scientific, Gibco) and supplemented with 15% FBS (MilliporeSigma), 2 mM L-Glutamine (Gemini Bioproducts), 1 mM sodium pyruvate (Thermo Fisher Scientific, Gibco), 1x MEM non-essential amino acids solution (Thermo Fisher Scientific, Gibco), 1% penicillin/streptomycin (Gemini Bioproducts), 1% EmbryoMax nucleosides (MilliporeSigma), 55  $\mu$ M 2-mercaptoethanol (Thermo Fisher Scientific, Gibco), and 1000 U/ml ESGRO LIF (MilliporeSigma). mESCs were differentiated into spinal neural progenitor cells using a previously described protocol (Sagner et al., 2018). mESCs were panned to clear the feeder cells, then plated on 6-well gelatin-coated CellBIND plates (Corning) at a density of 100,000 cells/well. Differentiation was conducted in N2B27 Medium: DMEM/F12 (Thermo Fisher Scientific, Gibco) and Neurobasal medium (Thermo Fisher Scientific, Gibco) (1:1 ratio) supplemented with 1x N-2 supplement (Thermo Fisher Scientific, Gibco), 1x B-27 supplement (Thermo Fisher Scientific, Gibco), 1% penicillin/streptomycin, 2 mM L-Glutamine, 55  $\mu$ M 2-mercaptoethanol (Thermo Fisher Scientific, Gibco), and 40  $\mu$ g/ml bovine serum albumin (MilliporeSigma). On Day 0 (the day the cells were plated) and Day 1, the N2B27 medium was supplemented with 10 ng/ml bFGF (R&D Systems). On Day 2, the N2B27 medium was supplemented with 10 ng/ml bFGF (R&D Systems) and 5  $\mu$ M CHIR 99021 (Axon Medchem). On Day 3, the N2B27 medium was supplemented with 100 nM Retinoic Acid (RA) (MilliporeSigma) and either no SHH, 5 nM (low SHH), or 25 nM (high SHH). The cells were cultured in RA and SHH for a total of 3 days, where the medium was changed every 24 h. On Day 6, the cells were washed with PBS and trypsinized with 0.25% Trypsin/EDTA (Thermo Fisher Scientific, Gibco) for flow cytometry analysis. GLI-Venus and OLIG2-mKate fluorescence was measured on a FACScan Analyzer at the Stanford Shared FACS Facility. To detect GLI-Venus, a 488 nm (blue) laser was used with a 525/50 filter and B525 detector. To detect OLIG2-mKate, a 561 nm (yellow) laser was used with a 615/25 filter and Y615 detector.

### Generation of Knockout Cell Lines

Clonal *Mgrn1*<sup>-/-</sup> NIH/3T3 lines were previously generated using a dual single guide (sgRNA) strategy and validated (Pusapati et al., 2018). Clonal double knockout *Mgrn1*<sup>-/-</sup>;*Rnf157*<sup>-/-</sup> NIH/3T3 lines were generated using the same dual sgRNA strategy to target *Rnf157* in *Mgrn1*<sup>-/-</sup> NIH/3T3 cells. Briefly, sgRNAs targeting *Rnf157* were designed using the Broad Institute Genetic Perturbation Platform sgRNA Designer Tool (<https://portals.broadinstitute.org/gpp/public/analysis-tools/sgrna-design>): Exon 6, 5'-CCACAGCGTGCCTACCAGA-3' and Exon 7, 5'-CAAAAGTGCCAGAACGACG-3'. The sgRNAs were then cloned into pSpCas9(BB)-2A-GFP (Addgene) (Ran et al., 2013) and pSpCas9(BB)-2A-mCherry (Pusapati et al., 2018) and transfected into

NIH/3T3 cells using X-tremeGENE 9 DNA transfection reagent (Roche Molecular Systems). Five days post transfection, GFP and mCherry double positive single cells were sorted into a 96-well plate using a FACSAria II at the Stanford Shared FACS Facility. To detect the GFP, a 488 nm (blue) laser was used with a 530/30 filter and B530 detector. To detect the mCherry, a 561 nm (yellow) laser was used with a 616/23 filter and G616 detector. Clonal lines were screened by PCR (Fwd 5'-GAGCAGAGAGGAGGTTAGCG-3' and Rev 5'-CAAGCTAGACCTTCCCGAGG-3') to detect excision of the genomic DNA (317 bp) between the two sgRNA cut sites (Figure S3B).

Clonal *Mgrn1*<sup>-/-</sup> HM1 mouse embryonic stem cells (mESCs) with both GLI-Venus and OLIG2-mKate reporters were previously created using a dual sgRNA strategy and validated (Pusapati et al., 2018). Similar to what was done in NIH/3T3 cells, clonal double knockout *Mgrn1*<sup>-/-</sup>;*Rnf157*<sup>-/-</sup> mESC lines were generated using a dual sgRNA strategy to target *Rnf157* in *Mgrn1*<sup>-/-</sup> mESCs. Briefly, the same sgRNAs used to target *Rnf157* in NIH/3T3 cells were used in mESCs, but these sgRNAs were cloned into pSpCas9(BB)-2A-Puro (Addgene) (Ran et al., 2013). Prior to any manipulation, the mESCs were maintained for three passages under feeder free conditions in 2i Medium: DMEM/F12 (Thermo Fisher Scientific, Gibco) and Neurobasal medium (Thermo Fisher Scientific, Gibco) (1:1 ratio) supplemented with 1x N-2 supplement (Thermo Fisher Scientific, Gibco), 1x B-27 supplement (Thermo Fisher Scientific, Gibco), 1% penicillin/streptomycin (Gemini Bioproducts), 2 mM L-Glutamine (Gemini Bioproducts), 55  $\mu$ M 2-mercaptoethanol (Thermo Fisher Scientific, Gibco), 40  $\mu$ g/ml bovine serum albumin (MilliporeSigma), 5  $\mu$ M CHIR 99021 (Axon Medchem), 1  $\mu$ M PD 98059 (Axon Medchem), and 1000 U/ml ESGRO LIF (MilliporeSigma). Cells were trypsinized in 0.25% Trypsin/EDTA (Thermo Fisher Scientific, Gibco) and rinsed once in PBS. Plasmids were nucleofected into the mESCs using the Lonza Cell nucleofector kit (VAPH-1001) and program A-023 on the Lonza Nucleofector 2b Device (Lonza Bioscience). After the cells were nucleofected, they were plated in 2i Medium onto a 10 cm gelatin-coated CellBIND plate. 24 h post nucleofection, selection was started and the medium was changed to 2i Medium containing 1.5  $\mu$ g/ml puromycin (MilliporeSigma) for 48 h (or until all the cells on the non-nucleofected control plate died). Approximately 1 week after nucleofection, individual mESC colonies were manually picked, expanded, and screened by PCR using the same primers used to screen the *Mgrn1*<sup>-/-</sup>;*Rnf157*<sup>-/-</sup> NIH/3T3 cells (Figure S3B).

### Generation of Stable Cell Lines Expressing Transgenes

Clonal *Megf8*<sup>-/-</sup> and *Mgrn1*<sup>-/-</sup> Flp-In-3T3 cell lines were previously generated and validated (Pusapati et al., 2018). Stable addback cell lines expressing tagged MEGF8 and MEGF8 <sup>$\Delta$ Ctail</sup> (featured in Figures 3D and 3E), were generated using Flp recombinase-mediated DNA recombination (Thermo Fisher Scientific, Invitrogen) as previously described (Pusapati et al., 2014). Briefly, the pOG44 Flp-recombinase expression vector (Thermo Fisher Scientific, Invitrogen) and either pEF5/FRT/V5-DEST-MEGF8-1D4 or pEF5/FRT/V5-DEST-MEGF8 <sup>$\Delta$ Ctail</sup>-1D4 were transfected into *Megf8*<sup>-/-</sup> NIH/3T3 cells using the X-tremeGENE 9 DNA transfection reagent (Roche Molecular Systems). Approximately 48 h post transfection the cells were split to 25% confluence and 12-16 h post split the medium was changed to Complete Medium containing 200  $\mu$ g/ml Hygromycin B (VWR Life Science). The medium was replenished every 3-4 days and antibiotic selection was conducted for about 2 weeks or until all the cells on the control plate were dead.

Stable addback cell lines expressing tagged MGRN1 (featured in Figures 3F and 3G) in *Mgrn1*<sup>-/-</sup>;*Rnf157*<sup>-/-</sup> NIH/3T3 cells or tagged MEGF8 in *Megf8*<sup>-/-</sup> NIH/3T3 cells (featured in Figures 4D and 4E) were generated using the lentiviral expression system. Briefly, to generate lentivirus, four million HEK293T cells were seeded onto a 10 cm plate and 24 h later these cells were transfected with 1  $\mu$ g pMD2.G (Addgene), 5  $\mu$ g psPAX2 (Addgene), and 6  $\mu$ g of the desired pLenti CMV Puro DEST construct using 36  $\mu$ l of 1mg/ml polyethylenimine (PEI) (Polysciences). Approximately 48 h post transfection, the lentivirus was harvested and filtered through a 0.45  $\mu$ m filter. 2 ml of the filtered lentivirus solution was mixed with 2 ml of Complete Medium containing 16  $\mu$ g/ml polybrene (MilliporeSigma). The diluted virus was then added to NIH/3T3 cells seeded on 6-well plates. Approximately 48 h post infection, cells were split and selected with puromycin (2  $\mu$ g/ml) for 5-7 days or until all the cells on the control plate were dead.

### Established Mouse Lines

All mouse studies were conducted using animal study protocols approved by the Institutional Animal Care and Use Committee (IACUC) of Stanford University, the University of Pittsburgh, and the McLaughlin Research Institute for Biomedical Sciences. *Mgrn1*<sup>md-nc/md-nc</sup> null mutant mice (referred to in the paper as *Mgrn1*<sup>mi/mi</sup>) (MGI:3704004) and *Megf8*<sup>C193R/C193R</sup> mice (referred to in the paper as *Megf8*<sup>mi/mi</sup>) (MGI:3722325) have been described previously (Gunn et al., 2013; He et al., 2003; Zhang et al., 2009). *Mgrn1*<sup>md-nc/+</sup> animals crossed to *Megf8*<sup>C193R/+</sup> heterozygotes had been outcrossed to FVB/N/Mri and intercrossed for up to 3 generations. Animals were genotyped for the *Mgrn1*<sup>md-nc</sup> mutation by allele-specific PCR using the following primers: wild-type (Fwd 5'-GCCTGCATGGATAGATGGAT-3' and Rev 5'-AGGAAGTTGCCACAAGAACGCA-3') and mutant (Fwd 5'-CAAGACAACCAGGAGACTAAGGA-3' and Rev 5'-GCCCCAAGTCTAAACCTCT-3') (Gunn et al., 2019). Amplification was performed using GoTaq Green Master Mix (Promega Corporation), the initial 10 cycles with an annealing temperature of 60 °C, followed by 30 cycles with an annealing temperature of 57 °C. Animals were genotyped for the *Megf8*<sup>C193R</sup> mutation by either (1) sequencing of a PCR product generated using primers Fwd 5'-ACGACCCATATCTCTGCCTT-3' and Rev 5'-GCCTCCAGACCCTCCAAG-3' or (2) using allele-specific PCR with primers Fwd 5'-CTCAGCTCTGCACCCCTAAC-3' and Rev (wild-type) 5'-TCCCAAGAATCCAGGTTTACA-3' or Rev (mutant) 5'-CCAAGAATCCAGGTTTACAG-3'. Amplification was performed using GoTaq Green Master Mix (Promega Corporation), 30 cycles with an annealing temperature of 62 °C.

### Generation and Validation of *Rnf157*<sup>-/-</sup> Mutant Mice

*Rnf157*<sup>-/-</sup> mutant mice (referred to in the paper as *Rnf157*<sup>mi/mi</sup> mice) were generated by CRISPR/Cas9 mediated genome editing. The website Benchling ([www.benchling.com](http://www.benchling.com)) was used to design sgRNAs that target exon 4 of *Rnf157*: (5'-CTACTACCAGGCCACTG-3'

and 5'-TGAACCTCGACATTGTAG-3') (Figure S3B). Synthetic sgRNAs and Cas9 2NLS nuclease were purchased from Synthego and electroporated into one cell mouse embryos following the Easy Electroporation of Zygotes (EEZY) protocol (Tröder et al., 2018). Briefly, fertilized eggs/1-cell embryos were collected from superovulated C57BL/6J females mated to C57BL/6J males into M2 or EmbryoMax Advanced KSOM medium (MilliporeSigma). Cas9/sgRNA ribonucleoproteins (RNPs) were assembled by combining 4  $\mu$ M Cas9 protein with 4  $\mu$ M of sgRNAs in 20  $\mu$ l Opti-MEM reduced serum medium (ThermoFisher Scientific, Gibco) and incubating 10 min at room temperature. For each electroporation, up to 60 embryos were washed through one drop of Opti-MEM and added to the 20  $\mu$ l of Cas9 RNP mix. The entire solution was immediately transferred to a 1 mm cuvette (Bio-Rad Laboratories) and placed in a Bio-Rad Gene Pulser XCell electroporator. Two square wave pulses were applied (30V, 3 ms pulse duration, 100 ms interval). Embryos were retrieved from the cuvette by flushing twice with 100  $\mu$ l of pre-warmed KSOM, transferred to a droplet of KSOM under oil and maintained in a 37 °C incubator with 15% CO<sub>2</sub> for 1-24 h. Embryos were subsequently moved through a droplet of M2 medium and transferred to the oviduct of 0.5 dpc (days post coitum) pseudopregnant ICR females. At weaning, a small piece of tail tissue was taken from each pup and the DNA was isolated and genotyped using the following primers to PCR amplify the region around the sgRNA target sequences: Fwd 5'-AACAAAGTCCCAGTCCACTG-3' and Rev1 5'-CAAGCTAGACCTCCCGAGG-3' or Rev2 5'-CCTTTCAGCATGGCTTCTC-3'. Sequence data was analyzed using Synthego's ICE tool (<https://ice.synthego.com/#/>) and animals carrying modified alleles predicted to result in a loss of RNF157 function were mated to C57BL/6J animals. *Rnf157<sup>em1Tmg</sup>* carries a single nucleotide deletion at each sgRNA target site: a cysteine at position 58 of exon 4 and another cysteine at position 120 (Figure S3B). Animals carrying this allele were genotyped by sequencing, as described above, or by allele-specific PCR using the following genotyping primers: Fwd (wild-type) 5'-AGGCAAAGCTAAGGTCCACTAC-3', Fwd (mutant) 5'-AGGCAAAGCTAAGGTCCACTAA-3', and Rev 5'-CCTGCTATGCCGTCTTACCT-3'.

RT-PCR was used to verify loss of *Rnf157* expression in *Rnf157<sup>em1Tmg</sup>* mice. Briefly, brains (which express high levels of *Rnf157*) were collected from wild-type mice and *Rnf157<sup>em1Tmg</sup>* heterozygote and homozygote animals (Figure S3B). DNase-I treated RNA was extracted using TRIzol reagent (Thermo Fisher Scientific, Invitrogen) and the Direct-zol RNA miniprep kit (Zymo Research). Equal amounts of RNA were used as template for cDNA synthesis using the SuperScript III First-Strand Synthesis System (Thermo Fisher Scientific, Invitrogen). PCR was performed using GoTaq Green Master Mix (Promega Corporation) the following RT-PCR primers: Fwd 5'-ATCCCGTCCAATCCGTGTA-3' and Rev 5'-GTACCAGGTGCGATGTAGGA-3'.

## METHOD DETAILS

### Constructs

*MEGF8* constructs: Mammalian Gene Collection (MGC) cDNA clone for human *MEGF8* (NM\_001410.3) was purchased from Transomic Technologies, Inc and used as a template for the generation of all *MEGF8* constructs. All *MEGF8* constructs were tagged with a C-terminal 1D4 and cloned into pEF5/FRT/V5-DEST (Thermo Fisher Scientific, Invitrogen) or pLenti CMV PURO DEST (Campeau et al., 2009) using Gateway recombination methods (Thermo Fisher Scientific, Invitrogen). *MEGF8<sup>AN</sup>* (aa 2573-2778) was generated using restriction enzymes *SrfI* and *SapI* (New England Biolabs) to remove the N-terminal region (aa 26-2572 deleted). *MEGF8<sup>ΔCtail</sup>* (aa 1-2607) and *MEGF8<sup>ΔMASRPFA</sup>* (aa 2625-2631 deleted) were created using a combination of overlap extension PCR and restriction enzyme cloning methods. *MEGF8* chimeras were generated using Gibson assembly methods (New England Biolabs). *CD16<sup>ECD</sup>-CD7<sup>TM</sup>-MEGF8<sup>Ctail</sup>* (aa 2604-2778), *CD16<sup>ECD</sup>-MEGF8<sup>TM+Ctail</sup>* (aa 2573-2778), and *CD16<sup>ECD</sup>-MEGF8<sup>TM+CtailΔMASRPFA</sup>* (aa 2573-2778 with aa 2625-2631 deleted) were all cloned using *MEGF8<sup>AN</sup>* and *CD16<sup>ECD</sup>-CD7<sup>TM</sup>-mCherry-Nck-HA* (gift from Bruce Mayer (Rivera et al., 2009)). Lastly, for the bacterial production of *MEGF8* Ctail recombinant protein, the C-terminal end of the Ctail (aa 2738-2778) was cloned into the pGEX vector using restriction enzyme cloning methods.

### Mgrn1 Constructs

Mouse full-length *Mgrn1* (NM\_001252437.1) with a C-terminal 3xFLAG tag was synthesized as a gBlock (Integrated DNA Technologies) and used as a template for the generation of all *Mgrn1* constructs. Overlap extension PCR was used to generate *MGRN1<sup>Mut1</sup>* (C279A;C282A) and *MGRN1<sup>Mut2</sup>* (L307A;R308A). All constructs were cloned into pEF5/FRT/V5-DEST (Thermo Fisher Scientific, Invitrogen) or pLenti CMV PURO DEST (Campeau et al., 2009) using Gateway recombination cloning methods (Thermo Fisher Scientific, Invitrogen).

### Smo Constructs

*mSmo*-EGFP was a gift from Philip Ingham (Zhao et al., 2016). For Figure S6C, *pCS2-mSmo* (Byrne et al., 2016), and a *mSmo* gBlock fragment with all 21 intracellular lysines mutated to arginines (Twist Bioscience) were used as templates to generate the following constructs: untagged full-length *Smo* (WT), intracellular lysine-less *Smo* (K0), C-tail lysine-less *Smo* (Ctail<sup>K0</sup>), intracellular loop 2 and 3 lysine-less *Smo* (ICL<sup>K0</sup>), intracellular loop 2 lysine-less *Smo* (ICL2<sup>K0</sup>), and intracellular loop 3 lysine-less *Smo* (ICL3<sup>K0</sup>). Constructs were generated using PCR amplification followed by Gibson assembly methods (New England Biolabs).

### Other Constructs

SSTR3-GFP was a gift from Kirk Mykytyn (Berbari et al., 2008) and pRK5-HA-Ubiquitin-WT and pRK5-HA-Ubiquitin-K0 were purchased from Addgene (Lim et al., 2005).

### Reagents and Antibodies

Recombinant SHH was expressed in bacteria and purified in the lab as previously described (Bishop et al., 2009). Briefly, His-tagged SHH-N (C24II followed by human SHH aa 25-193) was expressed in *Escherichia coli* (BL21 strain; Rosetta2 (DE3)pLysS). Cells were

lysed in 10 mM Phosphate Buffer pH 7.5, 500 mM NaCl, 1 mM 2-mercaptoethanol, 1 mM PMSF, and 1x SIGMAFAST protease inhibitor cocktail, followed by centrifugation at 20,000 xg for 30 min at 4°C. Clarified samples were incubated with Ni-NTA resin (Qia- gen) for 1 h at 4°C. The resin was washed with 20 column volumes of wash buffer A (lysis buffer without protease inhibitors), followed by wash buffer B (wash buffer A+10 mM Imidazole) and bound proteins eluted with elution buffer (wash buffer A+250 mM Imidazole). Peak fractions were pooled, concentrated using a 5 kDa cut-off VIVASPIN 15R (Life Technologies), and loaded onto a Superdex 75 gel filtration column (Amersham Biosciences) equilibrated with column buffer (10 mM HEPES pH 7.5, 150 mM NaCl, and 1 mM DTT). The recombinant protein was >98% pure, as assessed from coomassie staining and stored at -80 °C. SAG was purchased from Thermo Fisher Scientific (Enzo Life Sciences). The selection antibiotic puromycin was purchased from MilliporeSigma and hygromycin B from VWR Life Science. The transfection reagent XtremeGENE 9 was purchased from Roche Molecular Systems and polybrene from MilliporeSigma. Bafilomycin A1 was purchased from Cayman Chemical. Vismodegib and Bortezomib were purchased from LC labs. The following primary antibodies were purchased from the following vendors: mouse anti-1D4 (The University of British Columbia, 1:5000); mouse anti-CD16 (clone 3G8, Santa Cruz Biotechnology, 1 µg per 1 million cells in 100ul); mouse anti-CD16 (clone DJ130c, Santa Cruz Biotechnology, 1 µg per 1 million cells in 100ul); mouse anti-FLAG (clone M2, MilliporeSigma, 1:2000); goat anti-GFP (Rockland Immunochemicals, 1:1000); rabbit anti-GFP (Novus Biologicals, 1:5000); mouse anti-GLI1 (clone L42B10, Cell Signaling, 1:1000); mouse anti-HA.11 (clone 16B12, BioLegend, 1:2000); mouse anti-HA (clone 2-2.2.14, Thermo Fisher Scientific, 1:2000); rabbit anti-p38 (Abcam, 1:2000); and rabbit anti-RNF156 (anti-MGRN1, Proteintech, 1:500); mouse anti- $\alpha$ -Tubulin (Clone DM1A, MilliporeSigma, 1:10000); mouse anti-acetylated-Tubulin (MilliporeSigma, 1:10000). The following primary antibodies were generated in the lab or received as a gift: Guinea pig anti-ARL13B (1:1000) (Dorn et al., 2012); rabbit anti-SMO (designed against an intracellular epitope, 1:2000) (Rohatgi et al., 2007); and rabbit anti-SMO-N (designed against an extracellular epitope, 1:2000) (Milenkovic et al., 2009). The anti-MEGF8 rabbit polyclonal antibody was produced against amino acids 2738-2778 of the mouse MEGF8 protein and affinity purified before use (Cocalico Biologicals, 1:2000). Hoechst 33342 and secondary antibodies conjugated to horseradish peroxidase (HRP) or Alexa Fluor dyes were obtained from Jackson Laboratories and Thermo Fisher Scientific.

### Protein Sequence Analysis

Iterative sequence profile searches were performed using the PSI-BLAST program run against the NCBI non-redundant (NR) protein database (Altschul et al., 1997). Multiple sequence alignments were built using the Kalign2 software (Lassmann et al., 2009) and were later manually adjusted based on profile-profile, secondary structure information, and structural alignments. Similarity-based clustering for both classification and discarding of nearly identical sequences was performed using the BLASTClust program (Figure S4A). Maximum-likelihood (ML) tree topology was derived using an edge-linked partition model as implemented in the IQ-TREE software (Nguyen et al., 2015). ModelFinder (Kalyaanamoorthy et al., 2017) was used to automatically identify the best-fit substitution model and estimated “JTT+F+R9” as the suitable model for the given dataset. Branch supports were obtained using the ultrafast bootstrap (UFBoot) approximation method (1,000 replicates) (Hoang et al., 2018). To further assess the branch supports, Shimodaira-Hasegawa(SH- $\alpha$ LRT) branch test was also computed as implemented in the IQ-TREE software (Figure 2B). The sequence logo was generated using the Logo software (Crooks et al., 2004) (Figure 3B). An alignment comprising a collection of all unique members of the MEGF8-Attractin family from the RefSeq database was utilized as input. The UniProt align tool was used to compare two protein sequences with the Clustal Omega program (Figure S3A) (UniProt Consortium, 2019). Sequence analysis of the MGRN1 RING domain was done using ConSurf (Ashkenazy et al., 2016). Briefly, 200 MGRN1 homologs were collected from UniProt using the homolog search algorithm HMMER and a color coded multiple sequence alignment was built using ClustalW (Figure S4B).

### Immunoprecipitation and Western Blotting

Whole-cell extracts from HEK293T and NIH/3T3 cells were prepared in Immunoprecipitation (IP) Lysis Buffer: 50 mM Tris at pH 8.0, 150 mM NaCl, 1% NP-40, 1 mM DTT, 1x SIGMAFAST protease inhibitor cocktail (MilliporeSigma), and 1x PhosSTOP phosphatase inhibitor cocktail (Roche). Cells were lysed for 1 h on a shaker at 4 °C, supernatants were clarified by centrifugation, and 1D4 tagged MEGF8 was captured by a 1D4 antibody (The University of British Columbia) covalently conjugated to Protein A Dynabeads (Thermo Fisher Scientific, Invitrogen). Immunoprecipitates were washed once with IP Wash Buffer A (50 mM Tris at pH 8.0, 150 mM NaCl, 1% NP-40, and 1 mM DTT), once with IP Wash Buffer B (50 mM Tris at pH 8.0, 500 mM NaCl, 0.1% NP-40, and 1 mM DTT), and finally with IP Wash Buffer C (50 mM Tris at pH 8.0, 0.1% NP-40, and 1 mM DTT). Proteins were eluted by resuspending samples in 1xNuPAGE LDS sample buffer (Thermo Fisher Scientific, Invitrogen) supplemented with 100 mM DTT, incubated at 37 °C for 30 min, and subjected to SDS-PAGE (Figures 3C, 3D, and S4C).

For all other immunoblotting data presented in the manuscript, whole cell extracts were prepared in RIPA lysis buffer: 50 mM Tris at pH 8.0, 150 mM NaCl, 2% NP-40, 0.25% Deoxycholate, 0.1% SDS, 0.5 mM TCEP, 10% glycerol, 1x SIGMAFAST protease inhibitor cocktail (MilliporeSigma), and 1x PhosSTOP phosphatase inhibitor cocktail (Roche). The resolved proteins were transferred onto a nitrocellulose membrane (Bio-Rad Laboratories) using a wet electroblotting system (Bio-Rad Laboratories) followed by immunoblotting.

### Flow Cytometry of Live Cells

As described above, a lentiviral expression system was used to stably express CD16/CD7/MEGF8 chimeras in *Megf8*<sup>-/-</sup> NIH/3T3 cells (diagramed in Figure S6D). A modified live cell immunostaining protocol from Santa Cruz Biotechnology and Cell Signaling



Technology was used to label and analyze cell surface CD16/CD7/MEGF8 chimeras (Figure S6E). Briefly, four cell lines were analyzed: *Megf8*<sup>-/-</sup>, *Megf8*<sup>-/-</sup> with *CD16*<sup>ECD</sup>-*CD7*<sup>TM</sup>-*Megf8*<sup>Ctail</sup> addback, *Megf8*<sup>-/-</sup> with *CD16*<sup>ECD</sup>-*Megf8*<sup>TM+Ctail</sup> addback, and *Megf8*<sup>-/-</sup> with *CD16*<sup>ECD</sup>-*Megf8*<sup>TM+Ctail</sup>Δ*MASRPFA* addback. Prior to staining, the cells were serum starved for 24 h to allow for primary cilia growth. On staining day, the Complete Medium was removed, the cells were rinsed with PBS, and then dissociated in 0.2% EDTA (prepared in PBS) for approximately 5 min at 37 °C. Upon seeing the cells lift from the plate, the cells were pipetted up and down five times to create a single cell suspension, and Complete Medium (containing 10% FBS) was added to neutralize the EDTA. A small sample was taken to determine the total number of cells present. The cells were then resuspended in Flow Cytometry (FCM) Blocking Buffer (0.5% bovine serum albumin prepared in PBS) at a concentration of 10 million cells/ml. The cells were blocked for 10 min on ice, 1 million cells (100 ul of the cell suspension) were then transferred to a fresh tube, and 1 ug of an anti-CD16 antibody (Santa Cruz Biotechnology, clones 3G8 and DJ130c) was added directly to the cells. The cells were incubated with primary antibodies for 30 min on ice. Primary antibodies were rinsed off with 2 washes in FCM Blocking Buffer. The cells were then incubated for 30 min on ice in 1 ug of donkey anti-mouse IgG, Alexa Fluor 488 (Thermo Fisher Scientific, Invitrogen) diluted in FCM Blocking Buffer. The cells were washed 2 times in FCM Blocking Buffer then analyzed on a BD Accuri C6 Flow Cytometer (BD Biosciences).

### SMO Internalization Assay

Cell surface internalization assay for SMO was performed as described previously for Figures 4A, S5A, and S5B (Pusapati et al., 2018). Briefly, wild-type, *Megf8*<sup>-/-</sup>, and *Mgrn1*<sup>-/-</sup>; *Rnf157*<sup>-/-</sup> NIH/3T3 cells were plated on 15 cm plates in Complete Medium (containing 10% FBS). Once the cells were confluent they were switched to Low Serum Medium (Complete Medium containing 0.5% FBS) for 24 h. On biotinylation day, the cells were removed from the 37 °C incubator and placed on an ice-chilled metal rack in a 4 °C cold room. The medium was removed and cells were quickly washed 3 times with ice-cold DPBS+ buffer (Dulbecco's PBS supplemented with 0.9 mM CaCl<sub>2</sub>, 0.49 mM MgCl<sub>2</sub>·6H<sub>2</sub>O, 5.6 mM dextrose, and 0.3 mM sodium pyruvate). Biotinylation of cell surface proteins using a non-cell permeable and thiol-cleavable probe was initiated by incubating cells with 0.4 mM EZ-Link Sulfo-NHS-SS-Biotin (Thermo Fisher Scientific) in DPBS+ buffer for 30 min. Unreacted Sulfo-NHS-SS-Biotin was quenched with 50 mM Tris (pH 7.4) for 10 min. Cells were then washed 3 times with a 1x Tris-buffered saline (25 mM Tris at pH 7.4, 137 mM NaCl, and 2.7 mM KCl) and whole cell extracts were prepared in Biotinylation Lysis Buffer A (50 mM Tris at pH 8.0, 150 mM NaCl, 2% NP-40, 0.25% Deoxycholate, 1x SIGMAFAST protease inhibitor cocktail (MilliporeSigma), and 1x PhosSTOP phosphatase inhibitor cocktail (Roche). Biotinylated proteins from clarified supernatants were captured on a streptavidin agarose resin (TriLink Biotechnologies), washed once with Biotinylation Lysis Buffer A, once with Biotinylation Wash Buffer A (Biotinylation Lysis Buffer A + 0.5% SDS), once with Biotinylation Wash Buffer B (Biotinylation Wash Buffer A + 150 mM NaCl), and finally once again with Biotinylation Wash Buffer A. Biotinylated proteins captured on streptavidin agarose resin were eluted in 1x NuPAGE-LDS sample buffer (Thermo Fisher Scientific, Invitrogen) containing 100 mM DTT at 37 °C for 1 h and assayed by immunoblotting for SMO (Figure S5B).

### Ubiquitination Assay

8 million HEK293T cells were plated onto a 15 cm plate. 24 h after plating, the cells were transfected using PEI. 6 ug of each construct was transfected into the cells (at a DNA:PEI ratio of 1:3). An empty plasmid construct was used as filler DNA to ensure that each plate was transfected with the same amount of DNA. 36 h post transfection, cells were pre-treated with 10 μM Bortezomib (a proteasome inhibitor) and 100 nM Bafilomycin A1 (a lysosome inhibitor) for 4 h to enrich for ubiquitinated proteins. Cells were washed twice with chilled 1x PBS and lysed in Ubiquitination Lysis Buffer A comprised of: 50 mM Tris at pH 8.0, 150 mM NaCl, 2% NP-40, 0.25% sodium deoxycholate, 0.1% SDS, 6M urea, 1 mM DTT, 10 μM Bortezomib, 100 nM Bafilomycin A1, 20 mM N-Ethylmaleimide (NEM, MilliporeSigma), and 1x SIGMAFAST protease inhibitor cocktail (MilliporeSigma). Clarified supernatants were diluted ten-fold with Ubiquitination Lysis Buffer B (Ubiquitination Lysis Buffer A prepared without urea) to adjust the urea concentration to 600 mM. For these assays, we assessed ubiquitination on both GFP tagged and untagged SMO. Ubiquitinated GFP tagged SMO (Figures 4B, 4C, S6A, and S6D) was captured using a GFP binding protein (GBP) covalently conjugated to carboxylic acid decorated Dynabeads (Dynabeads M-270 carboxylic acid, Thermo Fisher Scientific). Untagged SMO (Figure S6C) was captured using SMO antibody covalently conjugated to Protein A Dynabeads (Thermo Fisher Scientific, Invitrogen). Immunoprecipitates were washed once with Ubiquitination Wash Buffer A (Ubiquitination Lysis Buffer B + 0.5% SDS), once with Ubiquitination Wash Buffer B (Ubiquitination Wash Buffer A + 1 M NaCl), and finally once again with Ubiquitination Wash Buffer A. Proteins bound to dynabeads were eluted in 2x NuPAGE-LDS sample buffer (Thermo Fisher Scientific, Invitrogen) containing 30 mM DTT at 37 °C for 30 min and assayed by immunoblotting for GFP or SMO antibodies for GFP tagged SMO and endogenous SMO, respectively.

### Immunofluorescence Staining of Cells and Tissue and Image Quantifications

Mouse embryos (e12.5) were harvested and fixed in 4% (w/v) paraformaldehyde (PFA) in 1x PBS for 2 h at 4 °C and then rinsed thoroughly in chilled PBS. To cryopreserve the tissue, the embryos were transferred to 30% sucrose in 0.1M phosphate buffer (pH 7.2) and allowed to equilibrate overnight. To allow for better analysis of the tissue, the embryos were further dissected into five pieces: 2 hands (forelimbs), head, upper body, and lower body. All five pieces were then mounted and frozen into Tissue-Plus OCT (optimal cutting temperature) compound (Thermo Fisher Scientific) and 12-14 μm sections were collected. Prior to staining,

the tissue was blocked for 1 h in immunofluorescence (IF) Blocking Buffer: 1% normal donkey serum (NDS) and 0.1% Triton-X diluted in 1x PBS. In a humidified chamber, the sections were incubated with primary antibodies overnight at 4 °C, rinsed 3 times in PBST (1x PBS + 0.1% Triton-X), incubated with secondary antibodies and Hoescht for 1 h at room temperature, rinsed 3 times in PBST, and then mounted in Prolong Gold antifade mountant (Thermo Fisher Scientific, Invitrogen).

NIH/3T3 cells, pMEFs, and primary human fibroblasts were fixed in chilled 4% PFA in 1x PBS for 10 min and then rinsed with chilled PBS. Cells were incubated in IF Blocking Buffer for 30 min, primary antibodies for 1 h, and secondary antibodies for 30 min.

Fluorescent images were acquired on an inverted Leica SP8 confocal microscope equipped with a 63X oil immersion objective (NA 1.4). Z-stacks (~4 μm sections) were acquired with identical acquisition settings (laser power, gain, offset, frame and image format) within a given experiment. An 4-8X optical zoom was used for imaging cilia to depict representative images. For the quantification of SMO at cilia, images were opened in Fiji (Schindelin et al., 2012) with projections of the maximum fluorescent intensities of z-stacks. Ciliary masks were constructed based on ARL13B images and then applied to corresponding SMO images to measure the fluorescence intensity of SMO at cilia.

### Vismodegib Dosing via Oral Gavage

Vismodegib treatment was performed as described previously (Heyne et al., 2015). Briefly, *Megf8<sup>ml/+</sup> × Megf8<sup>ml/+</sup>* and *Mgrn1<sup>ml/m</sup> × Mgrn1<sup>ml/+</sup>* mouse crosses were set up and monitored daily. E0 was defined as midnight prior to visualization of the copulation plug. Females mice were weighed at ~e0.25 (the morning the plug was visualized) and ~e7.25. Only mice that gained 1.75 grams over 7 days were deemed “likely pregnant” and treated with either vehicle or Vismodegib. For Vismodegib treatment, a 3 mg/ml Vismodegib solution was prepared in 0.5% methyl cellulose (MilliporeSigma) with 0.2% Tween. Vismodegib (40 mg/kg) was administered via oral gavage every 12 h (~7am and 7pm) for a total of three days (e8.25, e8.75, e9.25, e9.75, e10.25, and e10.75). Embryos were harvested at e14.5, fixed in 4% (w/v) PFA in 1x PBS for 2-3 days, and analyzed for limb and patterning defects.

### Mouse Embryo Phenotyping Analysis

Mouse embryos (e13.5-14.5) were fixed in 4% (w/v) PFA in 1x PBS for 2-3 days. Necropsy was performed to determine visceral organ situs (i.e. lung and liver lobation, heart and stomach situs, and spleen and pancreas structure). The samples were embedded in paraffin and processed for episcopic confocal microscopy as previously described (Liu et al., 2013). Briefly, this entailed sectioning of the tissue block using a Leica sledge microtome with serial images of the block face captured with a Leica confocal microscope. The serial two-dimensional (2D) image stacks generated were three-dimensionally (3D) reconstructed using the Osirix software (Rosset et al., 2004) and digitally resliced in different orientations to aid in the analysis of intracardiac anatomy and the diagnosis of congenital heart defects (Liu et al., 2013).

### Variant Discovery and Validation

Genomic DNA was extracted from blood using the PAXgene Blood DNA kit (Qiagen). Patient genomic DNA was analyzed using whole-exome sequencing performed using the Agilent V5 Exome Capture kit followed by sequencing with the Illumina HiSeq2000 with 150 base paired-end reads with 100X coverage. Reads were aligned to the human reference genome (version hg19) using Burrows-Wheeler Alignment (BWA, version 0.5.9) (Li and Durbin, 2009) with default parameters, and further processed according to the recommendations of the Genome Analysis Toolkit (GATK) Best Practices (Van de Auwera et al., 2013; DePristo et al., 2011). GATK HaplotypeCaller was used for single-nucleotide polymorphism (SNP) and insertion/deletion mutation (INDEL) discovery and variants that passed the GATK Variant Score Quality Recalibration (VQSQR) and standard GATK filters with minor allele frequency <5% based on the Genome Aggregation Database (GnomAD). Only variants with Combined Annotation-Dependent Depletion (CADD) PHRED (Kircher et al., 2014) score of at least 10 were considered, and PolyPhen-2 (Adzhubei et al., 2010) and SIFT (Kumar et al., 2009) were used to assess variant pathogenicity. MEGF8/MGRN1/RNF157 variants recovered were validated by Sanger sequencing and heritable transmission was determined by further Sanger sequencing of genomic DNA from the parents.

### QUANTIFICATION AND STATISTICAL ANALYSIS

All data analysis and graphs were generated using GraphPad Prism 8. Violin plots were created using the “Violin Plot (truncated)” appearance function. In Prism 8, the frequency distribution curves of the violin plots are calculated using kernel density estimation. By using the “truncated” violin plot function, the frequency distributions shown are confined within the minimum to maximum values of the data set. On each violin plot, the median (central bold line) and quartiles (adjacent thin lines, representing the first and third quartiles) are labeled.

In Prism 8, the statistical significance between two groups was determined using either Mann-Whitney or an unpaired t-test and the significance between three or more groups was determined using either one-way ANOVA or the Kruskal-Wallis test. For each figure, p-values were calculated using Prism 8 and reported in the figure legend. P-values were reported using the following key: not-significant (ns) *p-value* > 0.05, \**p-value* ≤ 0.05, \*\**p-value* ≤ 0.01, \*\*\**p-value* ≤ 0.001, and \*\*\*\**p-value* ≤ 0.0001. Additional figure details regarding the *n*-value and statistical test applied were reported in the individual figure legends.

All cell biological and biochemical experiments were performed two to three independent times, with similar results. To validate newly generated *Mgrn1*<sup>-/-</sup>;*Rnf157*<sup>-/-</sup> NIH/3T3 and neural progenitor cell lines, 3 independent clonal cell lines were analyzed. Analysis of one clonal NIH/3T3 cell line was featured in the main figures (Figures 2A and 2C) and data from the additional cell lines was presented in the supplementary figures (Figures S3C, S3D, and S3E). Similarly, 2–3 primary mouse embryonic fibroblast (pMEF) cell lines were analyzed from both *Megf8*<sup>m/m</sup> and *Mgrn1*<sup>m/m</sup> embryos, where each pMEF cell line was generated from a single embryo (Figures 1A, 1B, S1B, and S1C).